

NOTES

Contains Ordnance Survey Data © Crown Copyright and database right 2023. Ordnance Survey 0100031673. Irradiance data obtained from the Global Solar Atlas 2.0, a free, web-based application developed and operated by the company Solargis s.r.o. on behalf of the World Bank Group, utilizing Solargis data, with funding provided by the Energy Sector Management Assistance Program (ESMAP). For additional information: <https://globalsolaratlas.info>

ISSUE PURPOSE

For Information

PROJECT NUMBER

60696507

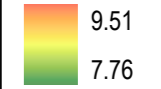
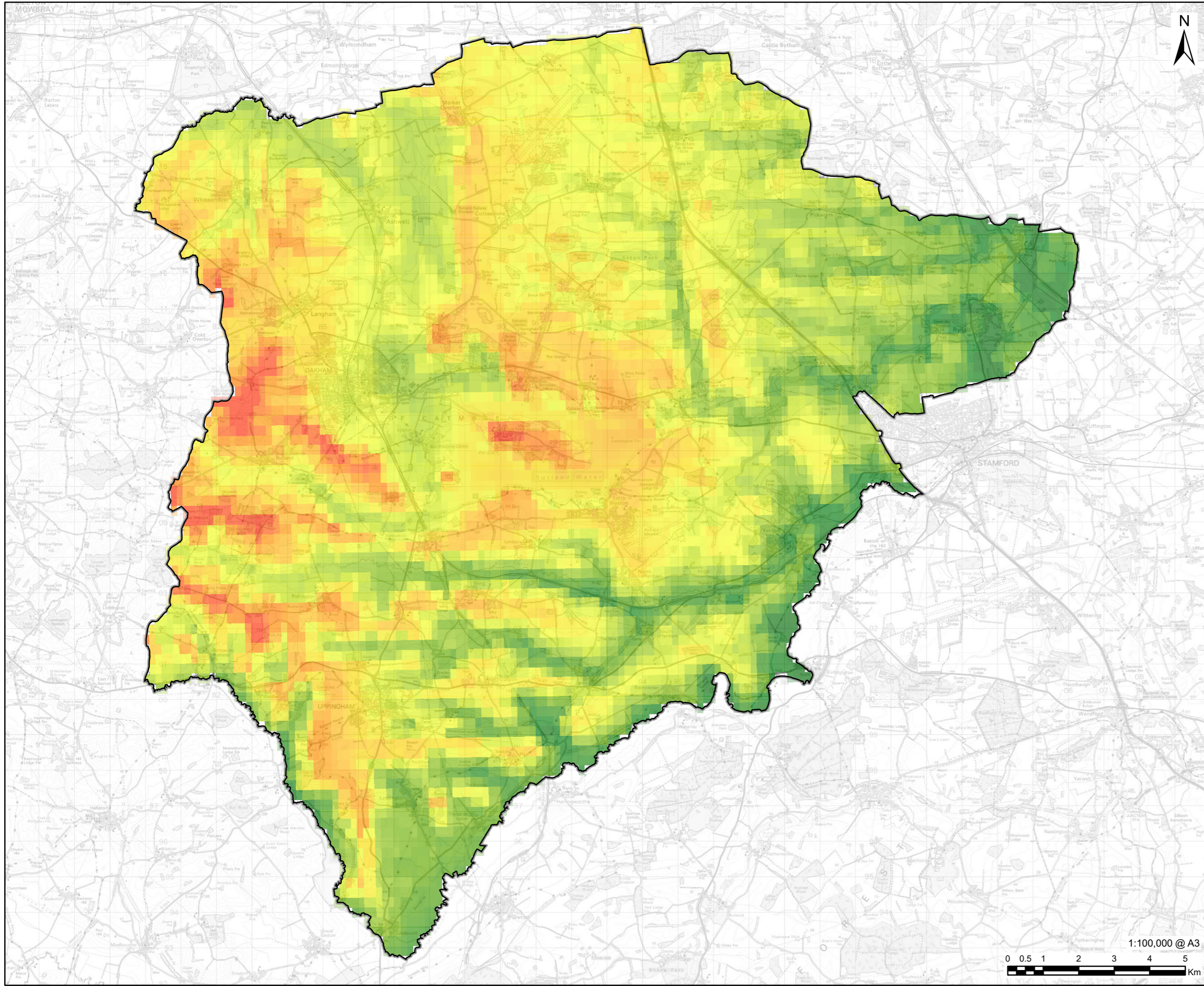
FIGURE TITLE

Global Horizontal Index (GHI)

FIGURE NUMBER

Figure 6

This drawing has been prepared for the use of AECOM's client. It may not be used, modified, reproduced or relied upon by third parties, except as agreed by AECOM or as required by law. AECOM accepts no responsibility, and denies any liability whatsoever, to any party that uses or relies on this drawing without AECOM's express written consent. Do not scale this document. All measurements must be obtained from the stated dimensions.



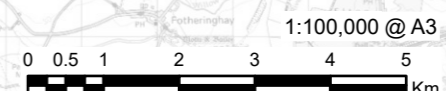
Contains Ordnance Survey Data © Crown Copyright and database right 2023. Ordnance Survey 0100031673. Wind speed data downloaded from the Global Wind Atlas, June 2023.

For Information

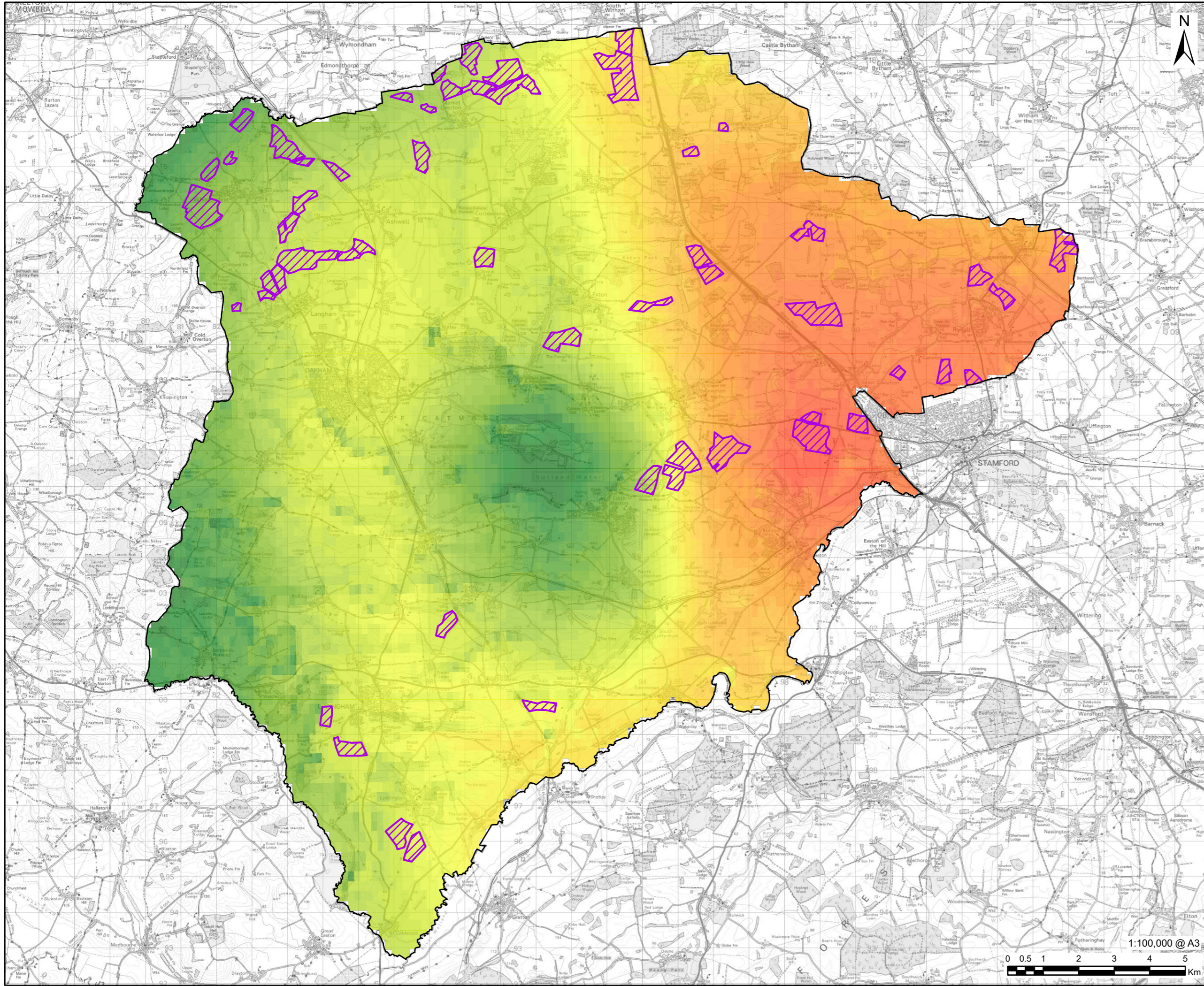
60696507

Mean Wind Speed at 100m (m/s)

Figure 7



This drawing has been prepared for the use of AECOM's client. It may not be used, modified, reproduced or relied upon by third parties, except as agreed by AECOM or as required by law. AECOM accepts no responsibility, and denies any liability whatsoever, to any party that uses or relies on this drawing without AECOM's express written consent. Do not scale this document. All measurements must be obtained from the stated dimensions.



PROJECT

Rutland

CLIENT

Rutland County Council

CONSULTANT

AECOM Limited
Sunley House
4 Bedford Park
Croydon, CR0 2AP
www.aecom.com

LEGEND

Rutland County Boundary

Ground Mounted Solar PV

Irradiance - Global Horizontal Index (GHI) (KWh/m²)

1008.46

994.21

NOTES

Contains Ordnance Survey Data © Crown Copyright and database right 2023. Ordnance Survey 0100031673. Irradiance data obtained from the Global Solar Atlas 2.0, a free, web-based application developed and operated by the company Solargis s.r.o. on behalf of the World Bank Group, utilizing Solargis data, with funding provided by the Energy Sector Management Assistance Program (ESMAP). For additional information: <https://globalsolaratlas.info>

ISSUE PURPOSE

For Information

PROJECT NUMBER

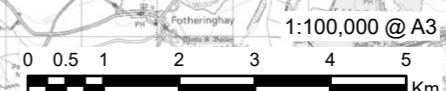
60696507

FIGURE TITLE

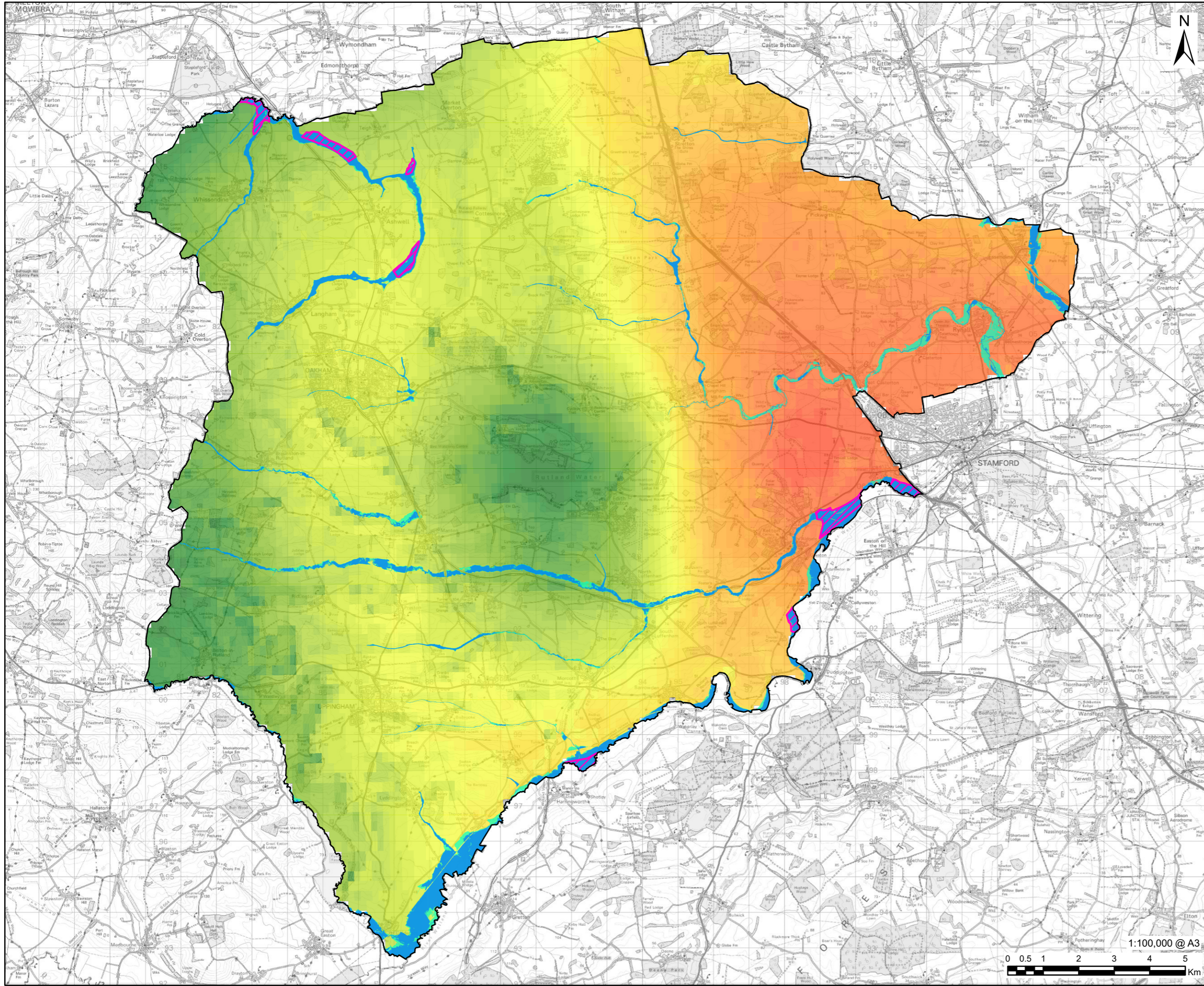
Global Horizontal Index (GHI) and Ground Mounted Solar PV




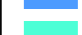


FIGURE NUMBER

Figure 8



This drawing has been prepared for the use of AECOM's client. It may not be used, modified, reproduced or relied upon by third parties, except as agreed by AECOM or as required by law. AECOM accepts no responsibility, and denies any liability whatsoever, to any party that uses or relies on this drawing without AECOM's express written consent. Do not scale this document. All measurements must be obtained from the stated dimensions.



-  Rutland County Boundary
 -  Ground Mounted Solar PV in Flood Zone
 -  Flood Zone 3
 -  Flood Zone 2
- Irradiance - Global Horizontal Index (GHI) (KWh/m²)**
-  1008.46
 -  994.21

NOTES

Contains Ordnance Survey Data © Crown Copyright and database right 2023. Ordnance Survey 0100031673. Irradiance data obtained from the Global Solar Atlas 2.0, a free, web-based application developed and operated by the company Solargis s.r.o. on behalf of the World Bank Group, utilizing Solargis data, with funding provided by the Energy Sector Management Assistance Program (ESMAP). For additional information: <https://globalsolaratlas.info>

ISSUE PURPOSE

For Information

PROJECT NUMBER

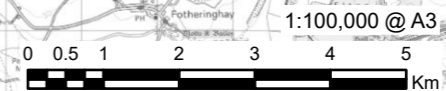
60696507

FIGURE TITLE

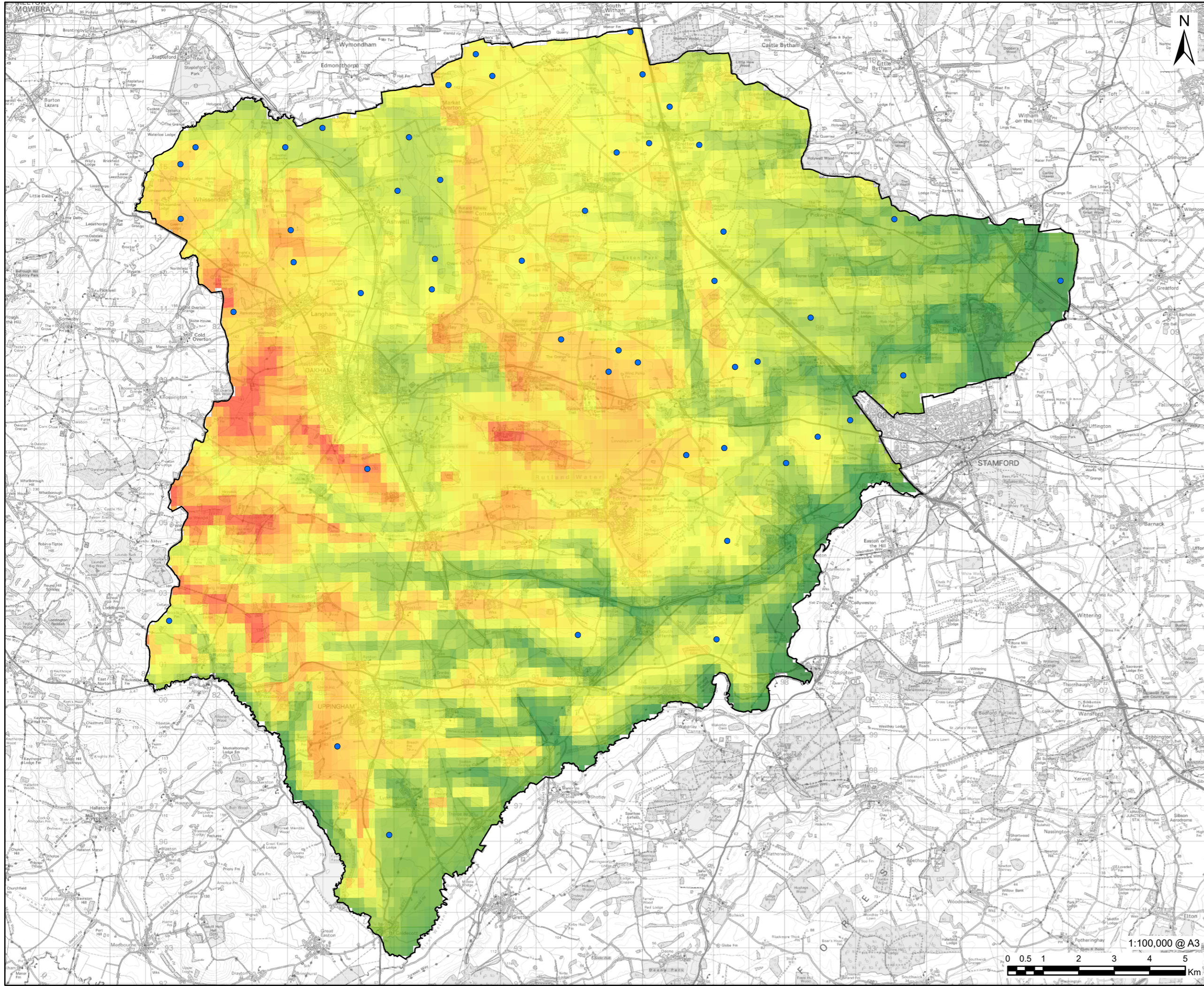
Global Horizontal Index (GHI) and Ground Mounted Solar PV in Flood Zone

FIGURE NUMBER

Figure 9



This drawing has been prepared for the use of AECOM's client. It may not be used, modified, reproduced or relied upon by third parties, except as agreed by AECOM or as required by law. AECOM accepts no responsibility, and denies any liability whatsoever, to any party that uses or relies on this drawing without AECOM's express written consent. Do not scale this document. All measurements must be obtained from the stated dimensions.



- Rutland County Boundary
 - Potential Wind Turbine
- Mean Wind Speed at 100m (m/s)**
- 9.51
 - 7.76

Note: Existing wind turbines are not shown.

NOTES

Contains Ordnance Survey Data © Crown Copyright and database right 2023. Ordnance Survey 0100031673. Wind speed data downloaded from the Global Wind Atlas, June 2023.

ISSUE PURPOSE

For Information

PROJECT NUMBER

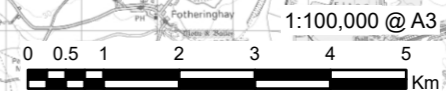
60696507

FIGURE TITLE

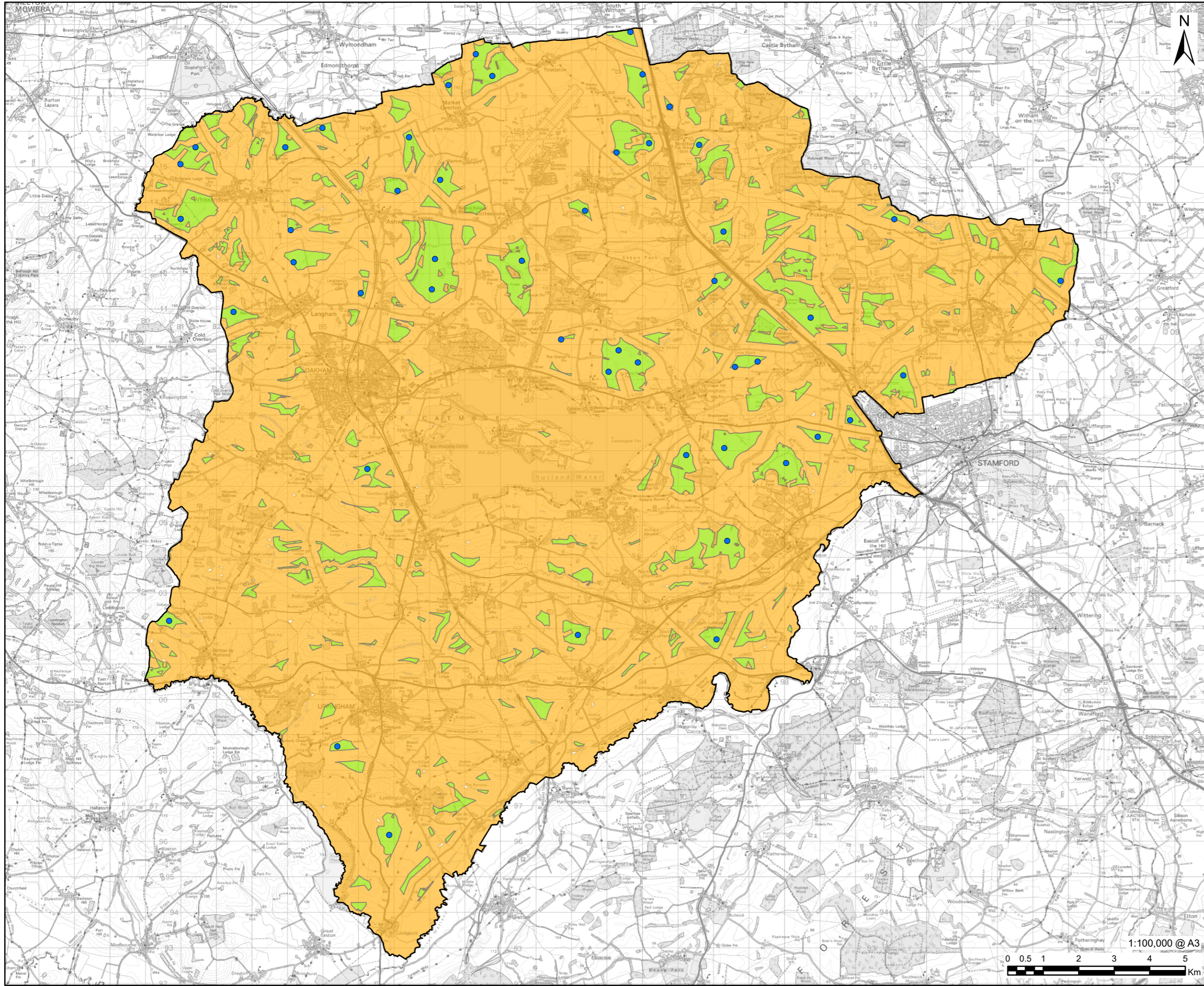
Potential Wind Turbine Locations





FIGURE NUMBER

Figure 10



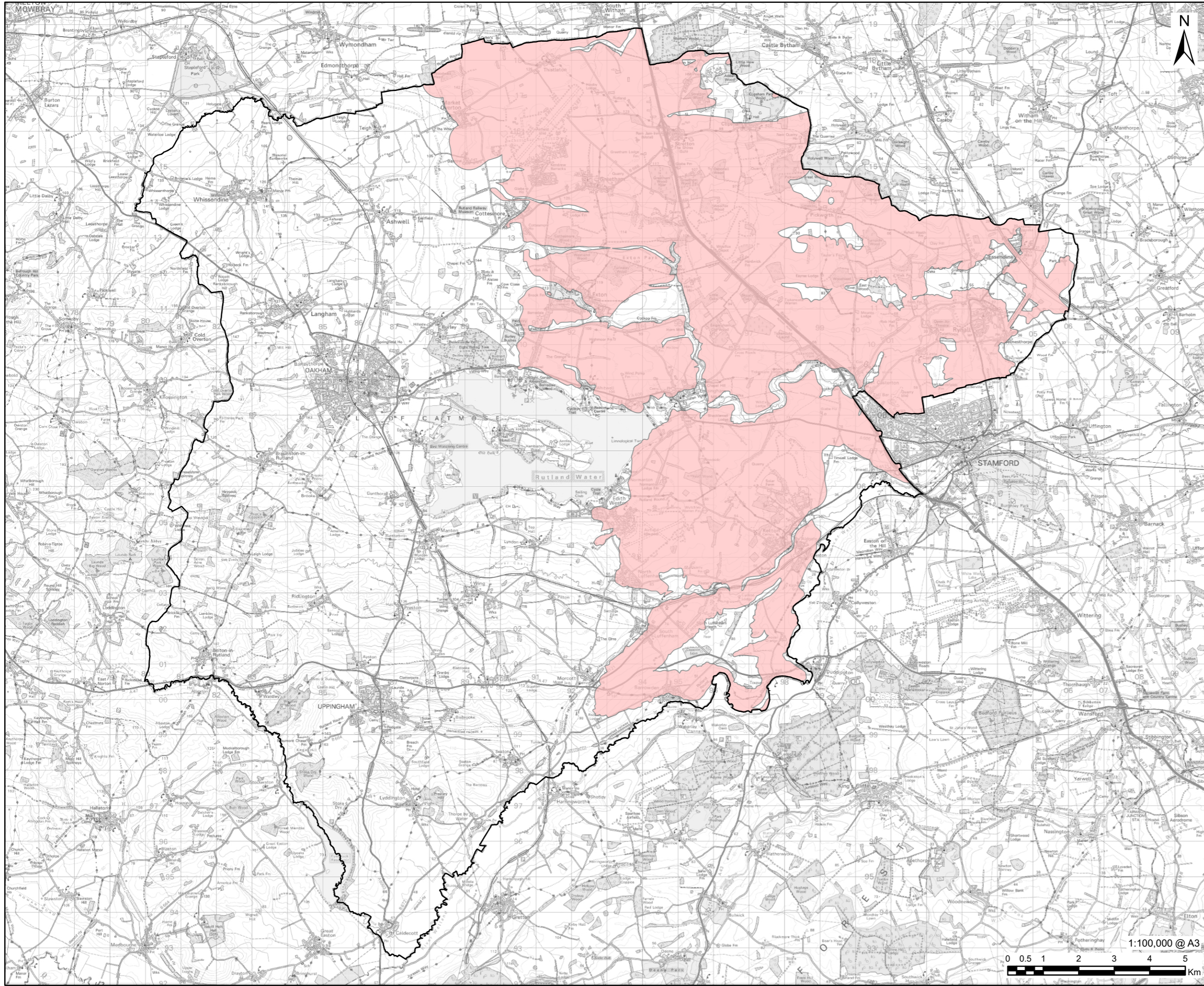
This drawing has been prepared for the use of AECOM's client. It may not be used, modified, reproduced or relied upon by third parties, except as agreed by AECOM or as required by law. AECOM accepts no responsibility, and denies any liability whatsoever, to any party that uses or relies on this drawing without AECOM's express written consent. Do not scale this document. All measurements must be obtained from the stated dimensions.





-  Rutland County Boundary
-  Potential Wind Turbine
-  Unconstrained Land Over 11,400sqm
-  Constrained Land

Contains Ordnance Survey Data © Crown Copyright and database right 2023. Ordnance Survey 0100031673.
 © Natural England copyright. Contains Ordnance Survey data © Crown copyright and database right 2023.
 © National Grid UK
 © Environment Agency copyright and/or database right 2018. All rights reserved. Some features of this map are based on digital spatial data from the Centre for Ecology & Hydrology, © NERC (CEH), © Crown copyright and database rights 2018 Ordnance Survey 100024198.
 © Historic England 2023. Contains Ordnance Survey data © Crown copyright and database right 2023. The Historic England GIS Data contained in this material was obtained on 2023. The most publicly available up to date Historic England GIS Data can be obtained from HistoricEngland.org.uk.

This drawing has been prepared for the use of AECOM's client. It may not be used, modified, reproduced or relied upon by third parties, except as agreed by AECOM or as required by law. AECOM accepts no responsibility, and denies any liability whatsoever, to any party that uses or relies on this drawing without AECOM's express written consent. Do not scale this document. All measurements must be obtained from the stated dimensions.



-  Rutland County Boundary
-  Limestone/Clay MSA region

Contains Ordnance Survey Data © Crown Copyright and database right 2023. Ordnance Survey 0100031673. Data sourced from Rutland County Council, 2023.

For Information

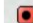


60696507

Limestone/Clay MSA region

Figure 12

This drawing has been prepared for the use of AECOM's client. It may not be used, modified, reproduced or relied upon by third parties, except as agreed by AECOM or as required by law. AECOM accepts no responsibility, and denies any liability whatsoever, to any party that uses or relies on this drawing without AECOM's express written consent. Do not scale this document. All measurements must be obtained from the stated dimensions.

Legend

-  Constrained
-  Rutland County Council
-  Unconstrained

