



# Rutland Open Space Assessment

## *Executive Summary*

July 2023  
9039.014

TEP  
Genesis Centre,  
Birchwood Science Park,  
Warrington,  
WA3 7BH

Tel: 01858 383120  
Email: [tep@tep.uk.com](mailto:tep@tep.uk.com)

Offices in Warrington, Market Harborough, Gateshead, London and Cornwall

<b>Document Title</b>	Rutland Open Space Assessment
<b>Prepared For</b>	Rutland County Council
<b>Prepared By</b>	The Environment Partnership (TEP) Ltd
<b>Document Ref</b>	9432.019

<b>Author</b>	Sorrel Bruce
<b>Date</b>	July 2023
<b>Checked</b>	Valerie Jennings
<b>Approved</b>	Rebecca Martin

Amendment History					
Version	Date	Modified By	Check / Approved by	Reason(s) Issue	Status
1.0	14.07.2023	V.Jennings	R.Martin	Initial Issue	Issued
2.0	21.07.2023	V.Jennings	R.Martin	Minor update to data	Issued

# Contents

Page

Introduction	.....5
Methodology	.....5
Current Provision	.....6
Quantity Assessment	.....7
Quality Assessment	.....8
Value Assessment	.....9
Accessibility Assessment	.....10
Recommendations	.....12

## Images

Image 1—Henry Wood Natural and Semi-Natural Greenspace

Image 2— Uppingham Playing Fields Outdoor Sports Facilities

Image 3—Bede House from St Andrews Church

## Figures

Figure 1—Open spaces in Rutland

Figure 2—Open space quality audit scores by typology

Figure 3—Open space quality audit scores (county-wide)

Figure 4— Open space value audit scores by typology

Figure 5—Open space value audit scores (county-wide)

Figure 6—A map showing the Allotments and Community Garden accessibility in Rutland

Figure 7—A map showing the Amenity Greenspace accessibility in Rutland

Figure 8—A map showing the Natural and Semi-Natural accessibility in Rutland

Figure 9—A map showing the Outdoor Sports Facility provision accessibility in Rutland.

Figure 10—A map showing the Parks and Gardens accessibility in Rutland.

Figure 11—A map showing the Provision for Children and Young People accessibility in Rutland.

## Tables

Table 1—A table showing the current provision of Open Space in Rutland

Table 2—A table showing the Open Space by Typology in Rutland

Table 3—A table showing the Open Space Accessibility thresholds.

# Executive Summary

TEP was commissioned by Rutland County Council in April 2022 to produce an Open Space Assessment for the County.

This Assessment provides an evidence base for review of the Rutland Local Plan.

## Introduction

Open space is important due to its valuable contribution to quality of life, health, and the economy. Provision of a range of open space facilities in our towns and villages is very important in planning for a sustainable future and is embedded in national planning policy.

The evidence in this Open Space Assessment comprises an assessment of the quantity, accessibility, quality and value of open spaces within Rutland County and for each of the 15 sub-areas. The Open Space Assessment has been completed using the below methodology:

- Define the context, purpose and scope of the Assessment (Chapter 2);
- Review of national and local policy (Chapter 3);
- Identification and mapping of open spaces per typology (Chapter 4);
- Identify local needs including consultation with key stakeholders, the community and developers (Chapter 5);
- Assess the quantity, quality and accessibility of each open space (Chapter 6);
- Develop local standards for open space provision (Chapter 7);
- Review of current and future provision of each sub-area (Chapter 8); and
- Provide recommendations and strategy based on the findings of the Open Spaces Assessment (Chapter 9).

## Methodology

This Open Spaces Assessment is in line with the National Planning Policy Framework (NPPF) (2021) and Planning Practice Guidance (PPG) for Open Space, which have replaced Planning Policy Guidance Note 17: Planning for Open Space Sport and Recreation (2002) and its companion guide, Assessing Needs and Opportunities: A companion guide to Planning Policy Guidance 17 (2002).

Indoor sports facilities are not included in this review. They are considered as part of the recently updated Playing Pitch Strategy.

Open Spaces in the County are shown on the image below, alongside each Ward sub-area.

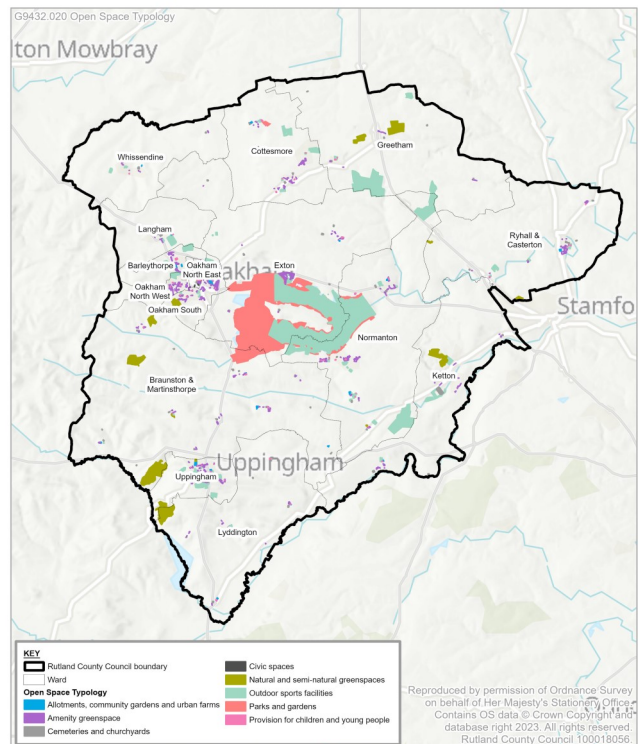


Figure 1 Open Spaces in Rutland

# Executive Summary

## Open Space Provision

### Current Provision

The current open space provision in the County is shown in the table below. **656 sites are designated as open space, with a total area of 2,439.70 hectares.**

Outdoor Sports Facilities accounts for 51.50% of the County's open space provision at 1256.44 ha. The total open space within the County equates to 60.28 ha per 1,000 population



Image 1: Henry Wood Natural and Semi-Natural Greenspace

Table 1: A table showing the current provision of Open Space in Rutland

Open Space Typology	No. Sites	Current Provision (ha)
Allotments and Community Gardens	27	16.34
Amenity Greenspace	366	82.18
Churchyards and Cemeteries	65	26.60
Civic Spaces	4	0.60
Natural and Semi-Natural Greenspace	16	263.88
Outdoor Sports Facilities	99	1256.44
Parks and Gardens	3	787.95
Provision for Children and Young People	76	5.72
<b>Final Total</b>	<b>656</b>	<b>2,439.70</b>

# Executive Summary

## Quantity Assessment and Standards

The proposed quantity standards are shown in the table below. Churchyards and Cemeteries and Civic Spaces have no quantity standard because there is no existing standard for the County or National Benchmark standard (Guidance for Outdoor Sport and Play: Beyond the Six Acre Standard, 2020)<sup>[1]</sup>.

As of 2020 the population for the County was 40,476. Using the proposed standard, there is a current deficiency in the provision for children and young people (-0.11 ha per 1,000 population). There is a current surplus of all other typologies.

The future population of Rutland is projected

to be 45,487 by 2041. When compared to the current provision of open space, this increase in population would result in a quantitative deficiency in the provision for children and young people (-0.12 ha per 1,000 population). All other typologies have a future surplus at a County level.

It is important to note that a surplus in any typology does not mean sites are surplus to requirement, rather the current provision exceeds the minimum standard.

<sup>(1)</sup>(Guidance for Outdoor Sport and Play: Beyond the Six Acre Standard, 2020).

Table 2: A table showing the Rutland Open Space Provision by Typology

Open Space Typology	Proposed Standard (ha per 1,000)	2020 ha per 1,000	2020 Surplus/Deficiency	2041 ha Per 1,000	2041 Surplus /Deficiency
Allotments and Community Gardens	0.23	0.40	0.17	0.36	0.13
Amenity Greenspace	0.75	2.03	1.28	1.81	1.06
Cemeteries and Burial Grounds	No Standard	0.66	-	0.58	-
Civic Spaces	No Standard	0.01	-	0.01	-
Natural and Semi-Natural Greenspace	1.80	6.52	4.72	5.80	4.00
Outdoor Sports Facilities	1.60	31.04	29.44	27.62	26.02
Parks and Gardens	0.80	19.47	18.67	17.32	16.52
Provision for Children and Young People	0.25	0.14	-0.11	0.13	-0.12

# Executive Summary

## Quality Assessment

157 open spaces were audited for Quality and Value, selected for their geographical location or typology.

The proposed quality standard is based on the Green Flag Award National Benchmark:

- Excellent - 90% to 100%
- Very Good - 80% to 89%
- Good - 70% to 79%
- Fair - 50% to 69%
- Poor - 0% to 49%

The graph to the right shows the current quality scores for the 157 audited sites. The graph below shows the quality scores per typology.

The recommended Quality standard is for all sites to achieve a Good Quality Score (70% or above, using the Green Flag Award benchmark).

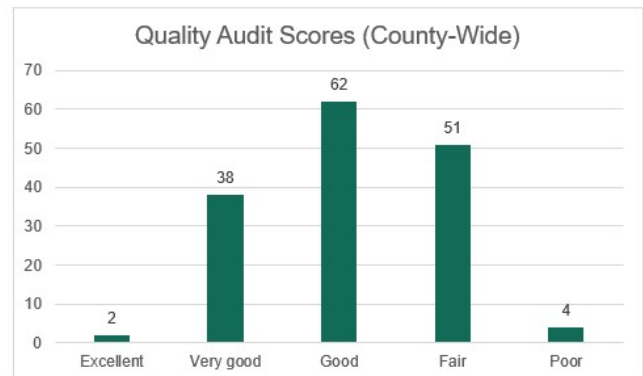


Figure 3: Open Space Audit Scores County-Wide

Amenity Greenspace, Natural and Semi-Natural Greenspace and Parks and Gardens should aim for the >70% quality score. Allotments and Community Gardens and Provisions for Children and Young People should use the scoring criteria to improve the open space quality where possible.

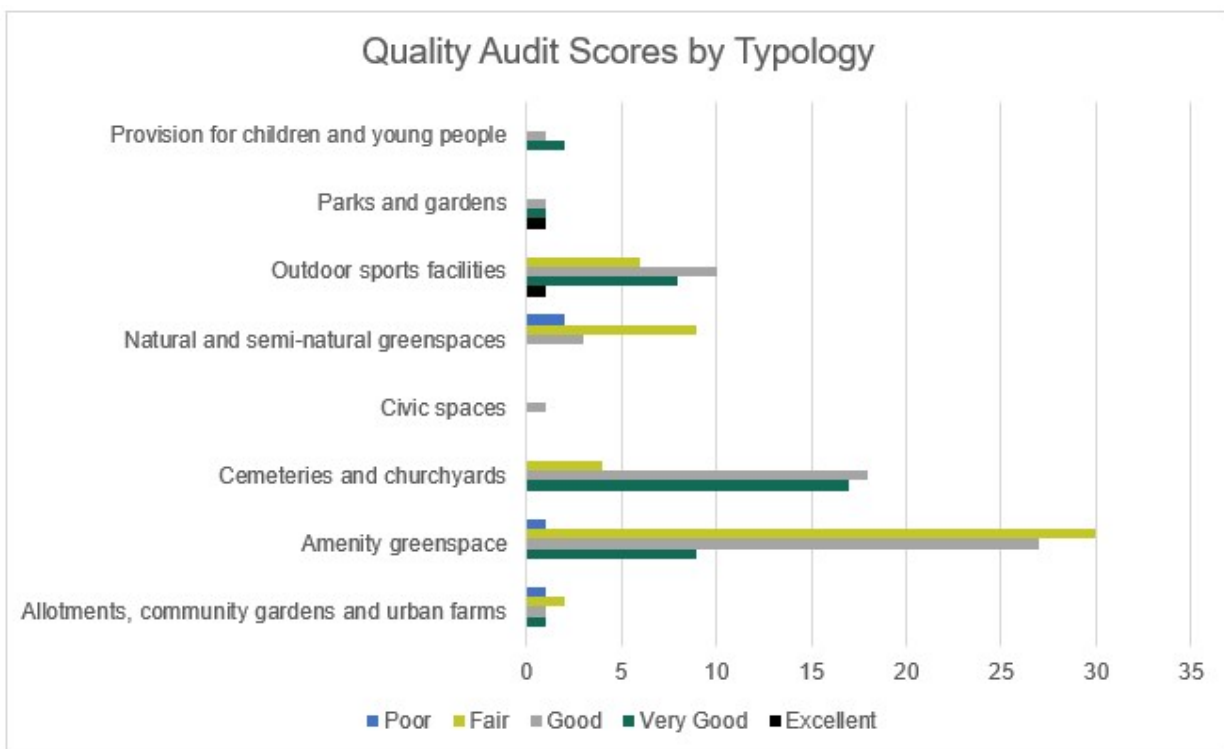


Figure 2: Open Space Quality Audit Scores by Typology



# Executive Summary

## Value Assessment

The value standard is based on ‘Assessing needs and opportunities: a companion guide to PPG17’. This allows a balanced assessment of each site. The value standard is:

- High - 60 to 100%;
- Medium - 40 to 59%; and
- Low - 0 to 39%

The graphs to the right show the current value of the 157 audited sites. The graph below shows the current value audit scores by typology.

The proposed value standard is that all sites obtain a Value Score of **60% or above**, classed as "High Value".

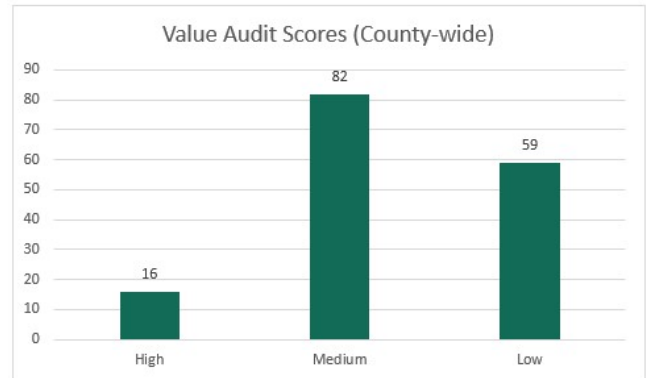


Figure 5: Value Audit Scores County-Wide

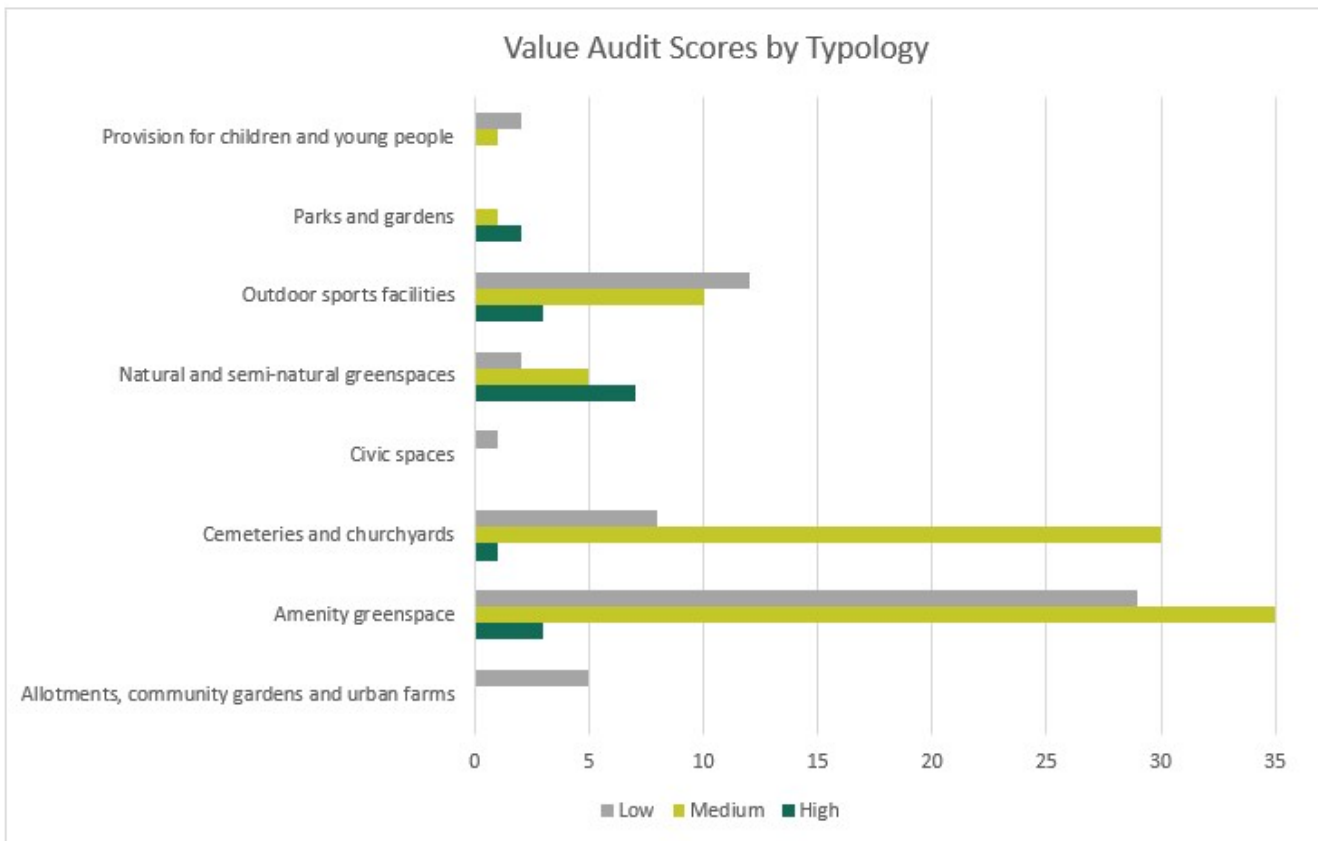


Figure 4: Value Audit Scores by Typology

# Executive Summary

## Accessibility Assessment

Allotments and Community Gardens, Amenity Greenspace, Natural and Semi-Natural Greenspace, Outdoor Sports Facilities, Parks and Gardens and Provision for Children and Young People have been assigned an accessibility standard. There is no accessibility standard assigned for Civic Spaces and Churchyards and Cemeteries as there is no accessibility National Benchmark (Guidance for Outdoor Sport and Play: Beyond the Six Acre Standard, 2020) for this typology.

The proposed accessibility standards are shown 'as the crow flies' (straight line) from an open space. The accessibility standards are shown in the table below. Accessibility maps show buffer catchments for each open space typology.

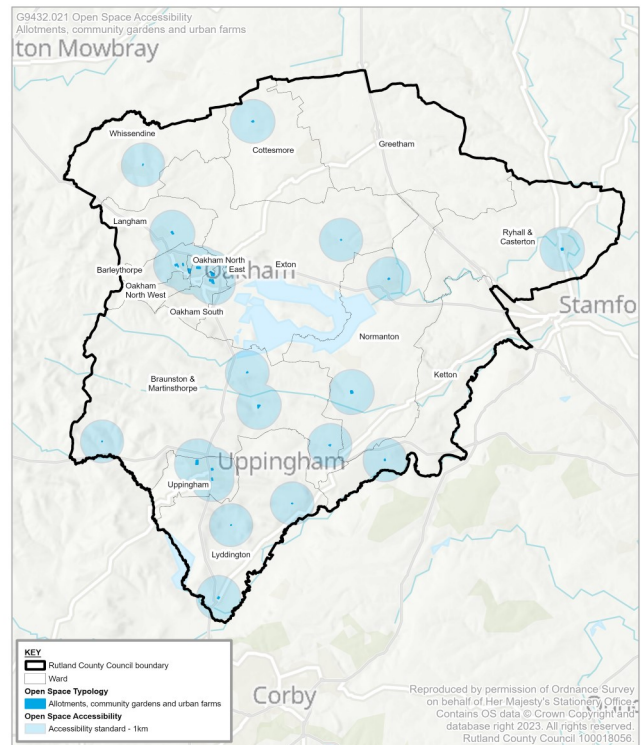


Figure 6: Allotments and Community Gardens accessibility in Rutland

Table 3: Accessibility Standards

Open Space Typology	Walking Threshold
Allotments and Community Gardens	1,000m
Amenity Greenspace	480m
Cemeteries and Burial Grounds	None Set
Civic Spaces	None Set
Natural and Semi-Natural Greenspace	720m
Outdoor Sports Facilities	1,200m
Parks and Gardens	710m
Provision for Children and Young People	LAP - 100 metres LEAP - 400 metres NEAP - 1000 metres

# Executive Summary

## Accessibility Assessment

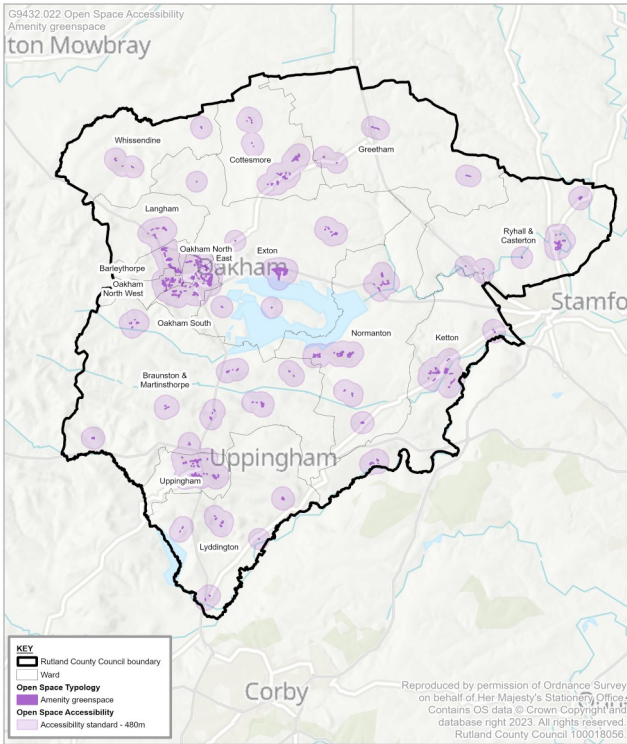


Figure 7: Amenity Greenspace accessibility in Rutland

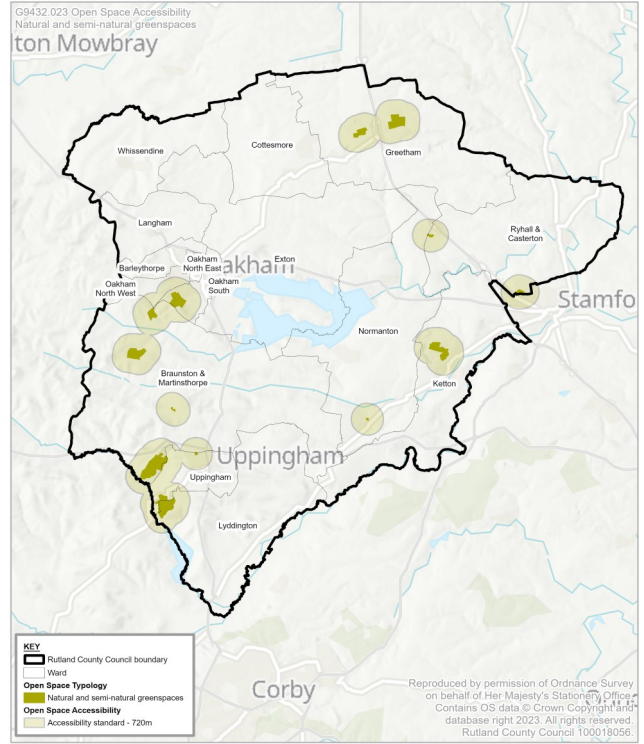


Figure 8: Natural and Semi-Natural accessibility in Rutland

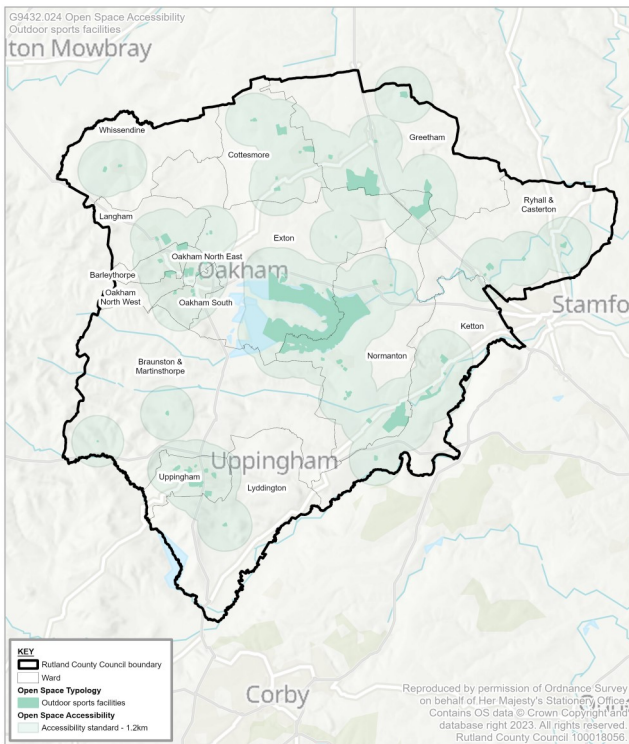


Figure 9: Natural and Semi-Natural Greenspace accessibility in Rutland

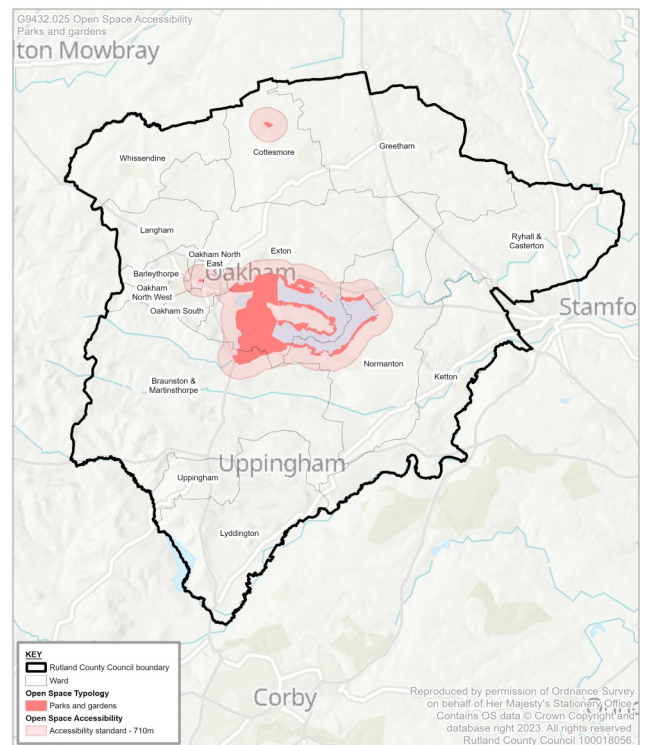


Figure 10: Parks and Gardens accessibility in Rutland

# Executive Summary

## Accessibility Assessment

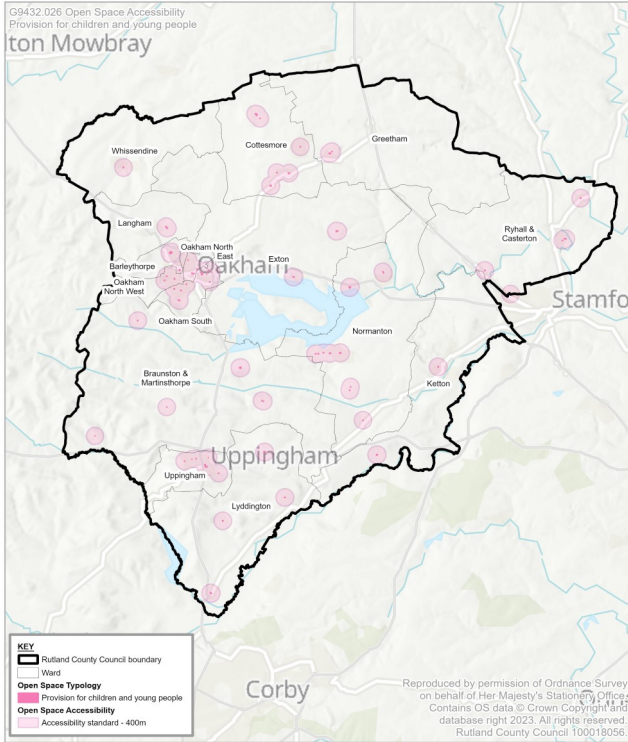


Figure 11: Provision for Children and Young People accessibility in Rutland

## Recommendations

Recommendations have been made in Chapter 9 Recommendations and Strategy. The recommendations include:

- Adopt the recommended standards (Chapter 7);
- Increase the multi-functionality open spaces where possible, including increasing green travel routes, improving aesthetic, increasing habitat for wildlife and the cultural offering;
- Production of a Supplementary planning document to outline open space requirements in new developments;
- Seek funding opportunities including Section 106 Agreement, Community Infrastructure Levy (CIL) and developer contributions; and
- Long term management of open spaces should be encouraged through management plans for open spaces.



Image 2: Uppingham Playing Fields Outdoor Sports Facilities



Image 3: Bede House from St Andrews Church



HEAD OFFICE

Genesis Centre,  
Birchwood Science Park,  
Warrington  
WA3 7BH

Tel: 01925 844004

E-mail: [tep@tep.uk.com](mailto:tep@tep.uk.com)

MARKET HARBOROUGH

Reynard Suite  
Bowden Business Village  
Market Harborough  
Leicestershire  
LE16 7SA

Tel: 01858 383120

E-mail: [mh@tep.uk.com](mailto:mh@tep.uk.com)

GATESHEAD

Office 26, Gateshead International  
Business Centre,  
Mulgrave Terrace,  
Gateshead  
NE8 1AN

Tel: 0191 605 3340

E-mail: [gateshead@tep.uk.com](mailto:gateshead@tep.uk.com)

LONDON

8 Trinity Street  
London  
SE1 1DB

Tel: 020 3096 6050

E-mail: [london@tep.uk.com](mailto:london@tep.uk.com)

CORNWALL

4 Park Noweth,  
Churchtown,  
Cury,  
Helston  
Cornwall  
TR12 7BW

Tel: 01326 240081

E-mail: [cornwall@tep.uk.com](mailto:cornwall@tep.uk.com)



