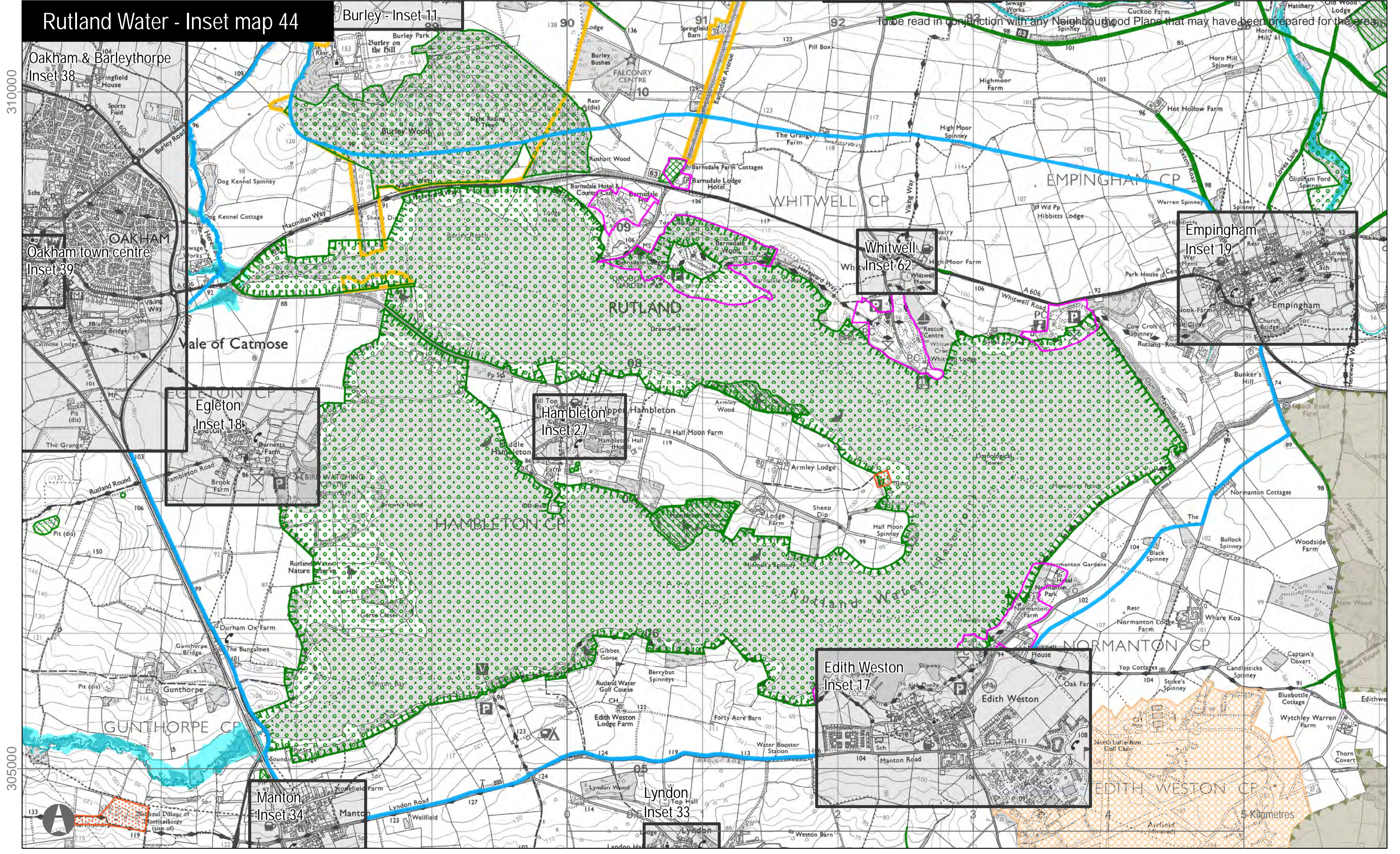
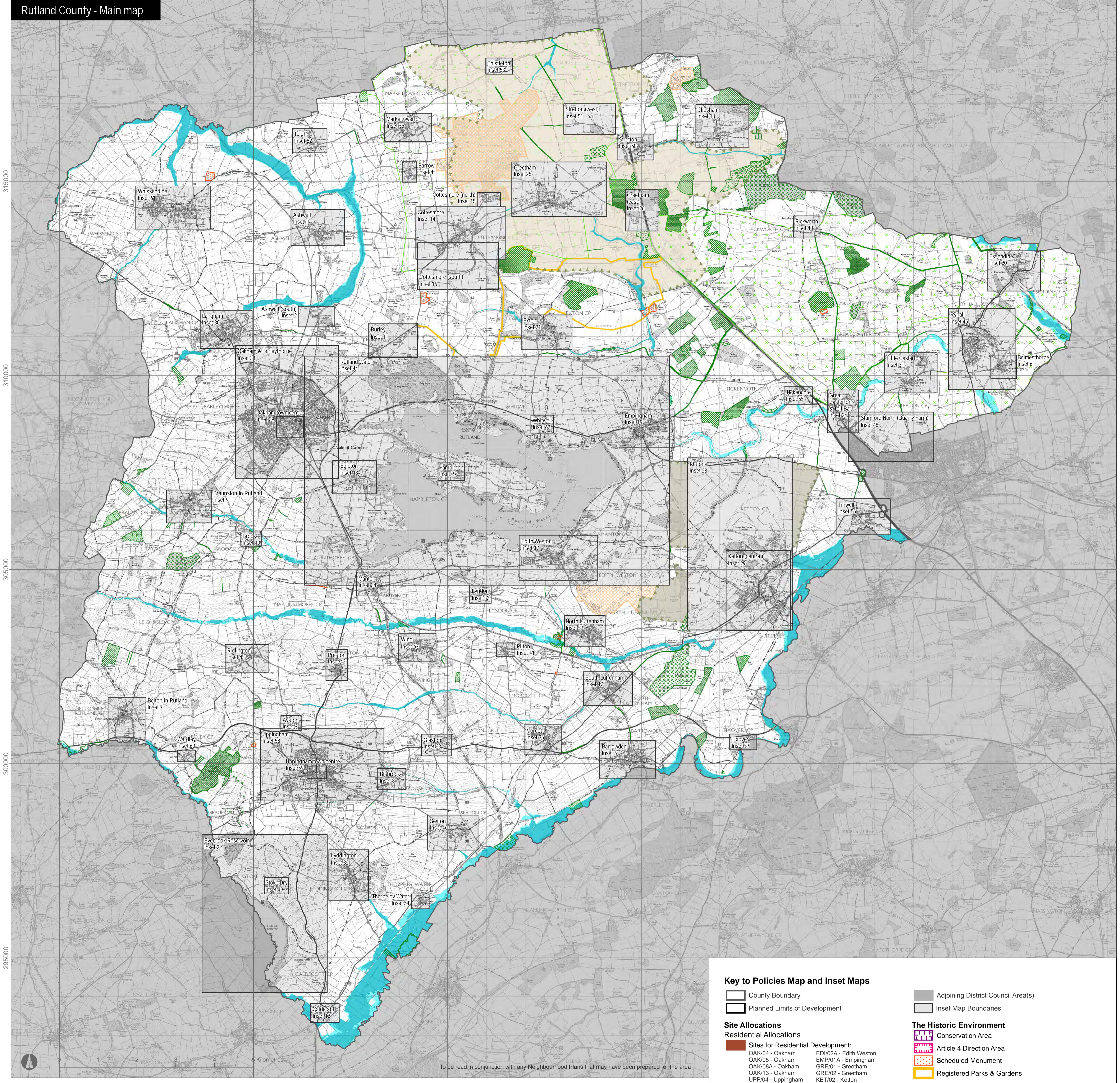


Rutland County - Main map



Key to Policies Map and Inset Maps

- County Boundary
- Planned Limits of Development
- Adjoining District Council Area(s)
- Inset Map Boundaries

Site Allocations

Residential Allocations

- Sites for Residential Development:
 - OAK/04 - Oakham
 - OAK/05 - Oakham
 - OAK/08A - Oakham
 - OAK/13 - Oakham
 - UPP/04 - Uppingham
 - UPP/05A - Uppingham
 - UPP/06A - Uppingham
 - UPP/08 - Uppingham
 - UPP/11 - Uppingham
 - COT/03 - Cottesmore
 - COT/13 - Cottesmore
 - EDI/02A - Edith Weston
 - EMP/01A - Empingham
 - GRE/01 - Greetham
 - GRE/02 - Greetham
 - KET/02 - Ketterton
 - MAR/04 - Market Overton
 - RH/04 - Ryhall
 - RH/06A - Ryhall
 - WH/06 - Whissendine
 - WH/09A - Whissendine

Stamford North (Quarry Farm)

- LIT/01 & LIT/02 - Stamford North (Quarry Farm)

Employment Allocations

- Sites for Employment Development:
 - KET/11 - Ketterton
 - UPP/02 - Uppingham
 - OAK/10 - Oakham

Retail Allocations

- Sites for Retail Development:
 - R1 - Oakham

Mixed-Use Allocations

- Sites for Mixed-Use Development:
 - OAK/13 - Oakham
 - GRE/01 - Greetham

Waste Allocations

- Sites for Waste Management & Disposal:
 - W1 - Cottesmore
 - W3 - Ketterton
 - W2 - Greetham

Minerals Allocations

- Minerals Allocations:
 - M4a - Greetham
 - M5a - Stretton

Minerals Safeguarding Areas

- Limestone Aggregate
- Limestone and Clay for Cement Purposes

Military Bases & Prisons

- Military Bases & Prisons:
 - (i) Kendrew Barracks (Cottesmore)
 - (ii) Stocken Prison
 - (iii) St George's Barracks (North Luffenham)

Town Centres

- Town Centre Areas
- Primary Shopping Frontage
- Secondary Shopping Frontage

The Historic Environment

- Conservation Area
- Article 4 Direction Area
- Scheduled Monument
- Registered Parks & Gardens

Reservoirs

- Rutland Water Area
- Recreation Areas:
 - A = Barnsdale
 - D = Normanton
 - B = Whitwell
 - E = Gibbet Lane
 - C = Sykes Lane
- Eyebrook Reservoir Area

Biodiversity & Geodiversity

- Sites of International Importance for Nature Conservation:
 - Boundary to Rutland Water (SPA/RAMSAR)
- Sites of National Importance for Nature Conservation:
 - Sites of Special Scientific Interest (SSSI)
- Sites of Local Importance for Nature Conservation:
 - Regionally Important Geological Site (RIGS)
 - Local Wildlife Site
 - Candidate Local Wildlife Site

Flood Zones

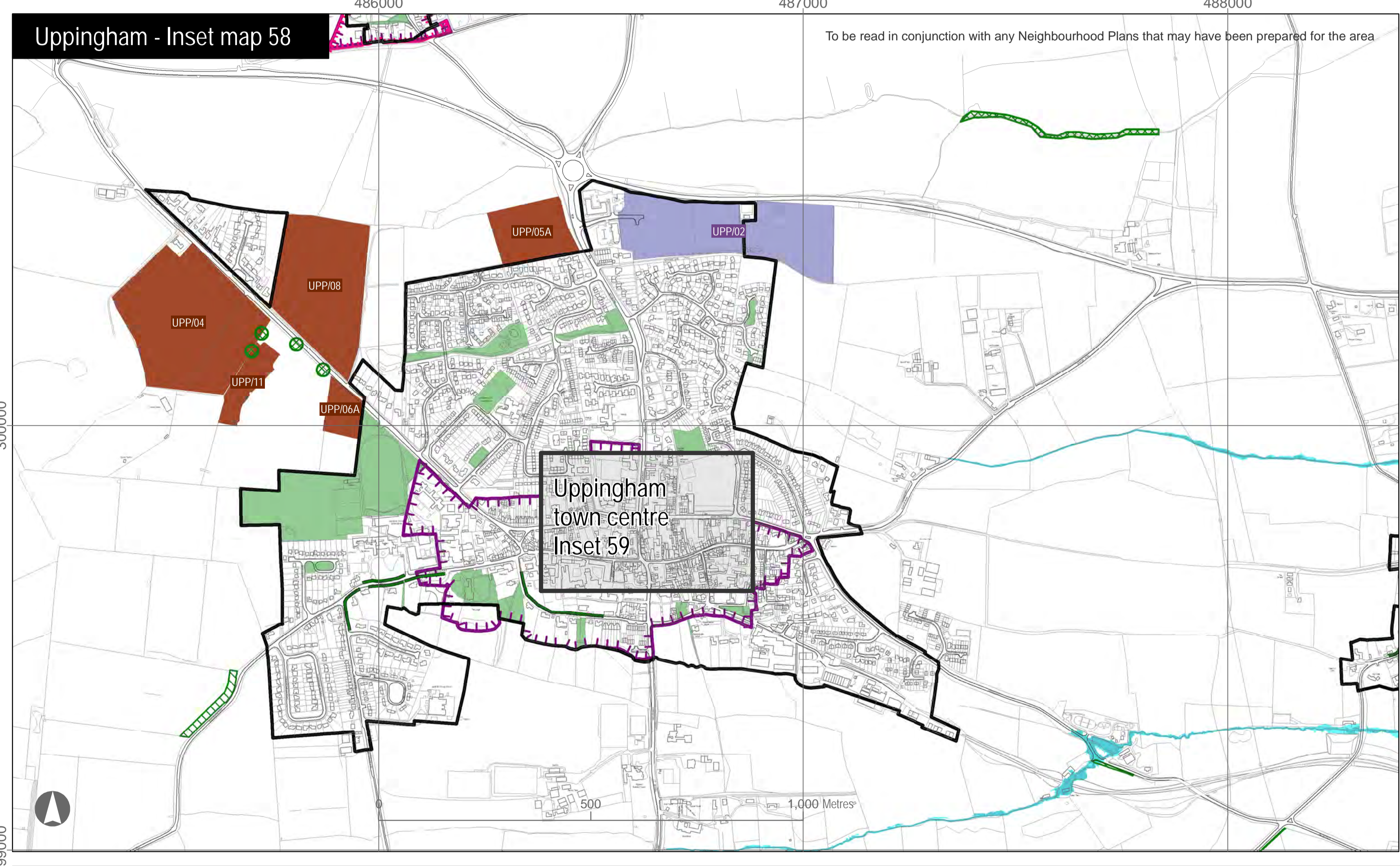
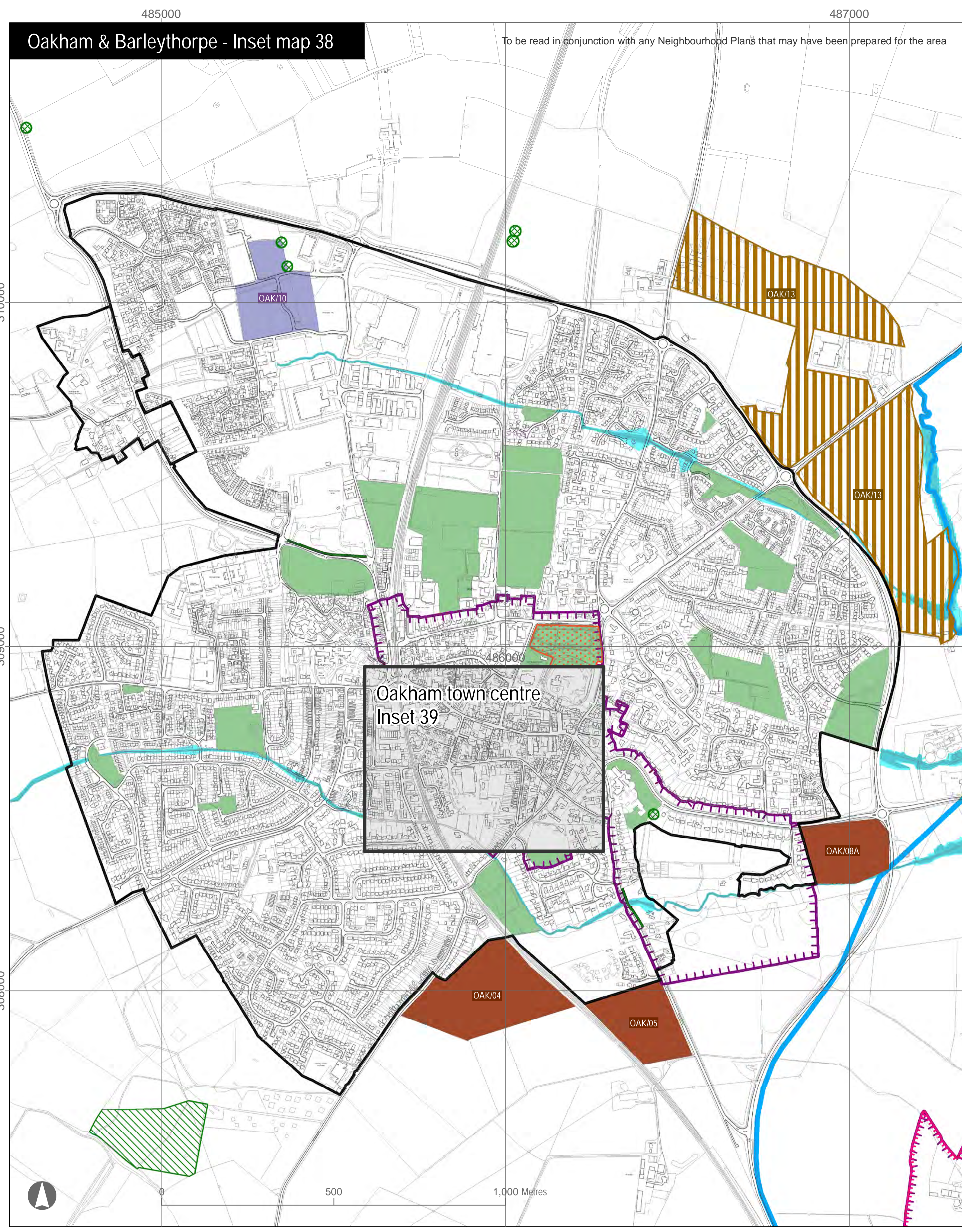
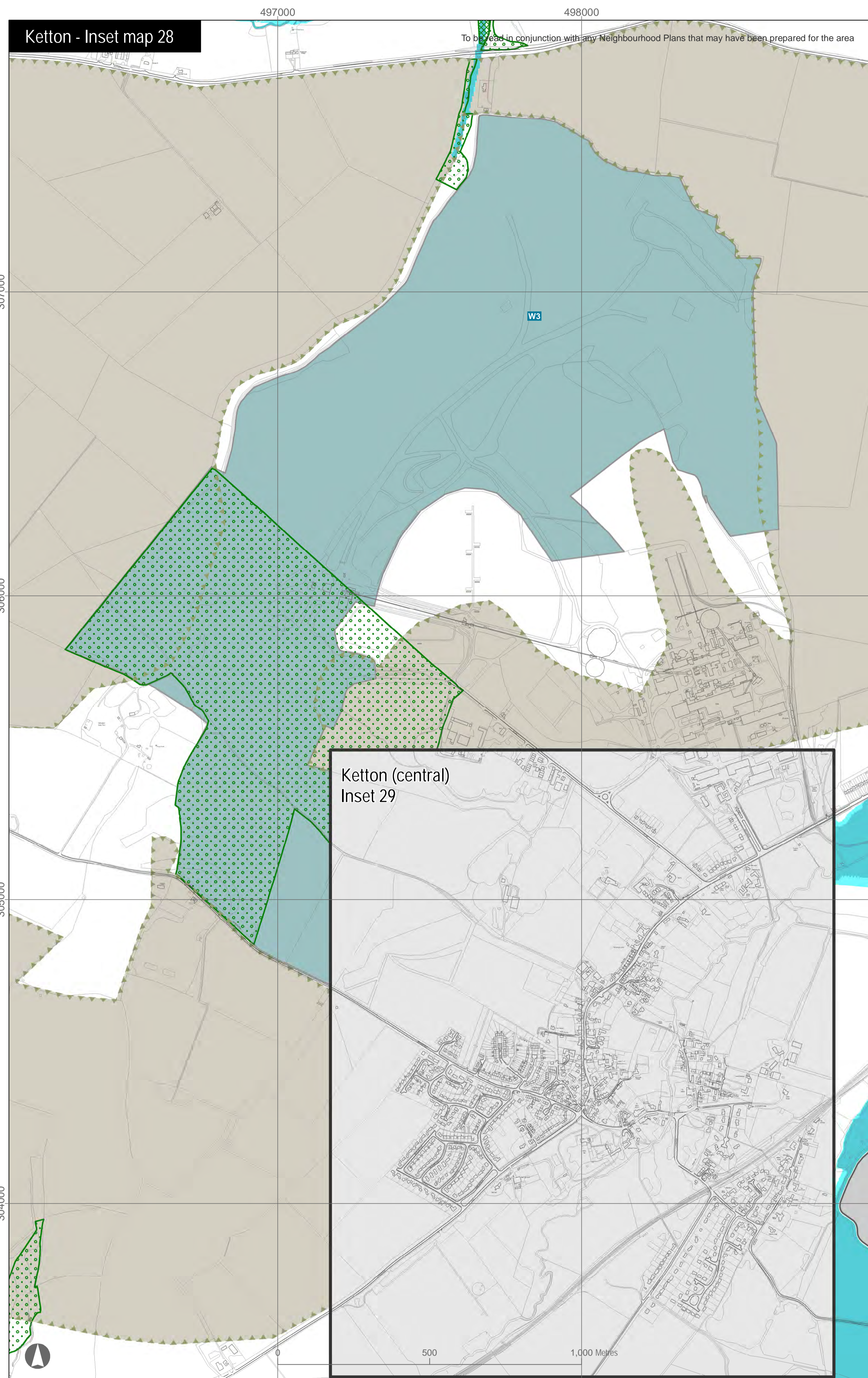
- Flood Zone 2
- Flood Zone 3

Low Carbon Energy Generation

- Areas Suitable for Wind Turbine Developments:
 - Area 1: Suitable for small-sized turbines (single, small and small-medium groups), medium-sized turbines (single, small groups); and large-sized turbines (single).
 - Area 2: Suitable for small-sized turbines (single, small groups); and medium-sized turbines (single).

Information on the Historic Environment and Biodiversity & Geodiversity Conservation correct at the time of preparation of the plan. The latest position can be checked with the Council.

© Crown copyright and database right 2017. Ordnance Survey Licence number 100018056.



Key to Policies Map and Inset Maps

- County Boundary
 - Planned Limits of Development
 - Adjoining District Council Area(s)
 - Inset Map Boundaries
- Site Allocations**
- Residential Allocations**
- Sites for Residential Development:
 - OAK/04 - Oakham
 - OAK/05 - Oakham
 - OAK/08A - Oakham
 - OAK/13 - Oakham
 - UPP/04 - Uppingham
 - UPP/05A - Uppingham
 - UPP/06A - Uppingham
 - UPP/08 - Uppingham
 - UPP/11 - Uppingham
 - COT/03 - Cottesmore
 - COT/13 - Cottesmore
 - EDI/02A - Edith Weston
 - EMP/01A - Empingham
 - GRE/01 - Greetham
 - GRE/02 - Greetham
 - KET/02 - Ketton
 - MAR/04 - Market Overton
 - RYH/04 - Ryhall
 - RYH/06A - Ryhall
 - WHI/06 - Whissendine
 - WHI/09A - Whissendine
- Stamford North (Quarry Farm)**
- LIT/01 & LIT/02 - Stamford North (Quarry Farm)
- Employment Allocations**
- Sites for Employment Development:
 - KET/11 - Ketton
 - UPP/02 - Uppingham
 - OAK/10 - Oakham
- Retail Allocations**
- Sites for Retail Development:
 - R1 - Oakham
- Mixed-Use Allocations**
- Sites for Mixed-Use Development:
 - OAK/13 - Oakham
 - GRE/01 - Greetham
- Waste Allocations**
- Sites for Waste Management & Disposal:
 - W1 - Cottesmore
 - W3 - Ketton
 - W2 - Greetham
- Minerals Allocations**
- Minerals Allocations:
 - M4a - Greetham
 - M5a - Stretton
- Minerals Safeguarding Areas**
- Limestone Aggregate
 - Limestone and Clay for Cement Purposes
- Military Bases & Prisons**
- Military Bases & Prisons:
 - (i) Kendrew Barracks (Cottesmore)
 - (ii) Stocken Prison
 - (iii) St George's Barracks (North Luffenham)
- Town Centres**
- Town Centre Areas
 - Primary Shopping Frontage
 - Secondary Shopping Frontage
- Important Open Spaces & Frontages**
- Important Open Space
 - Important Frontage
- The Historic Environment**
- Conservation Area
 - Article 4 Direction Area
 - Scheduled Monument
 - Registered Parks & Gardens
- Reservoirs**
- Rutland Water Area
 - Recreation Areas:
 - A = Barnsdale
 - B = Whitwell
 - C = Sykes Lane
 - D = Normanton
 - E = Gibbet Lane
 - Eyebrook Reservoir Area
- Biodiversity & Geodiversity**
- Sites of International Importance for Nature Conservation:
 - Boundary to Rutland Water (SPA/RAMSAR)
 - Sites of National Importance for Nature Conservation:
 - Sites of Special Scientific Interest (SSSI)
 - Sites of Local Importance for Nature Conservation:
 - Regionally Important Geological Site (RIGS)
 - Local Wildlife Site
 - Candidate Local Wildlife Site
- Flood Zones**
- Flood Zone 2
 - Flood Zone 3
- Low Carbon Energy Generation**
- Areas Suitable for Wind Turbine Developments
 - Area 1: Suitable for small-sized turbines (single, small and small-medium groups); medium-sized turbines (single, small groups); and large-sized turbines (single).
 - Area 2: Suitable for small-sized turbines (single, small groups); and medium-sized turbines (single).
- Information on the Historic Environment and Biodiversity & Geodiversity Conservation correct at the time of preparation of the plan. The latest position can be checked with the Council.*
- © Crown copyright and database right 2017. Ordnance Survey Licence number 100018056.