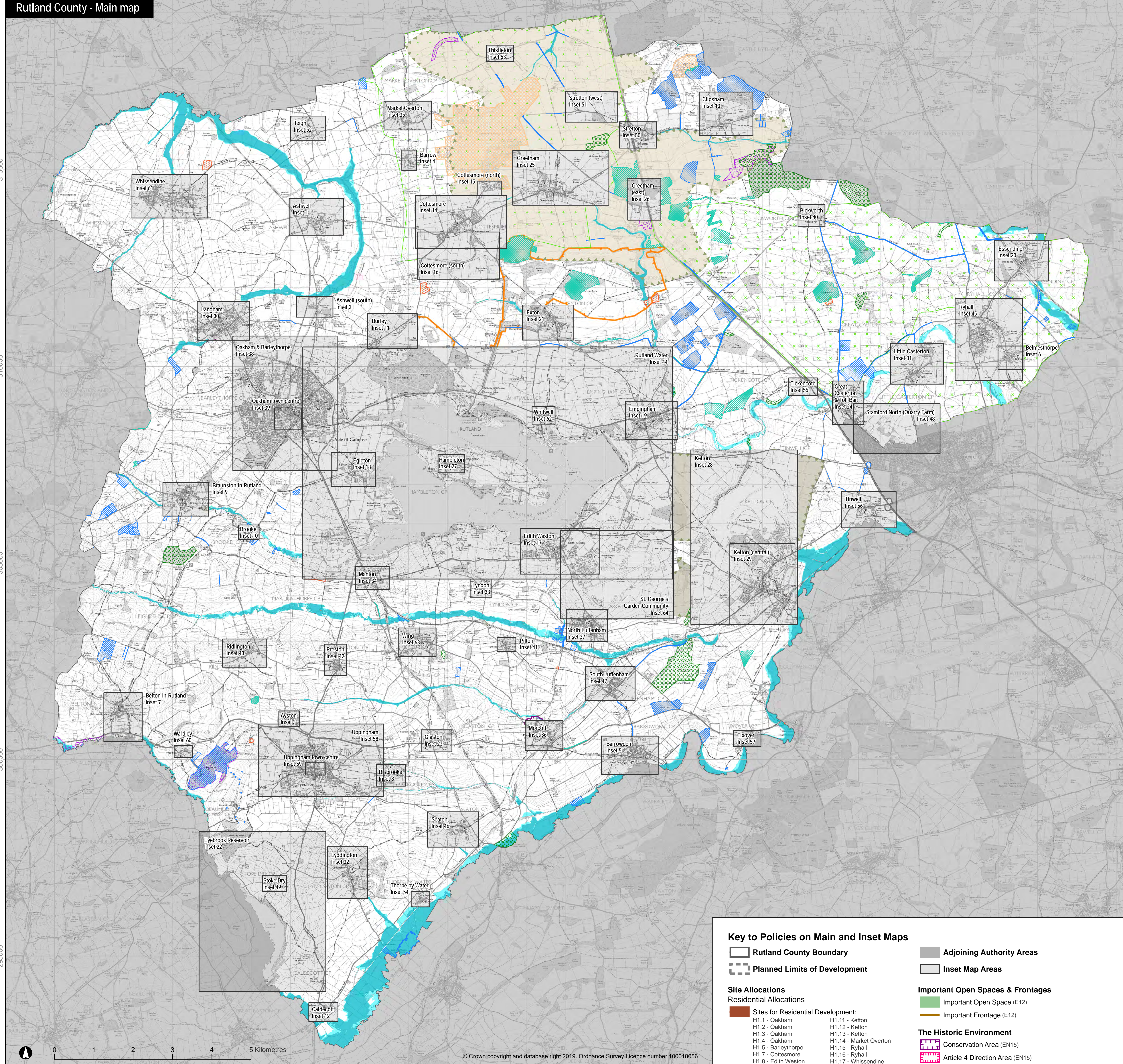


Rutland County - Main map



© Crown copyright and database right 2019. Ordnance Survey Licence number 100018056

Key to Policies on Main and Inset Maps

- Rutland County Boundary
 - Planned Limits of Development
 - Adjoining Authority Areas
 - Inset Map Areas
- Site Allocations**
- Residential Allocations**
- Sites for Residential Development:
 - H1.1 - Oakham
 - H1.2 - Oakham
 - H1.3 - Oakham
 - H1.4 - Oakham
 - H1.5 - Barleythorpe
 - H1.7 - Cottesmore
 - H1.8 - Edith Weston
 - H1.9 - Empingham
 - H1.10 - Empingham
 - H1.11 - Kettleton
 - H1.12 - Kettleton
 - H1.13 - Kettleton
 - H1.14 - Market Overton
 - H1.15 - Ryhall
 - H1.16 - Ryhall
 - H1.17 - Whissendine
 - H1.18 - Whissendine
- Stamford North (Quarry Farm)**
- Stamford North (Quarry Farm) (H4)
- Employment Allocations**
- Sites for Employment Development:
 - E1.1 - Uppingham
 - E1.2 - Oakham
 - E1.3 - Kettleton
- Retail Allocations**
- Sites for Retail Development:
 - R1 - Oakham
- St. George's Garden Community**
- St. George's Garden Community (H2; H3; E1)
- Waste Allocations**
- Sites for Waste Management & Disposal:
 - WST3.1 - Cottesmore
 - WST3.2 - Greatham
 - WST3.3 - Kettleton
- Minerals Allocations**
- Minerals Allocations:
 - MIN5 - Greatham
 - MIN6 - Stretton
- Minerals Safeguarding Areas**
- Limestone Aggregate (MIN3)
 - Limestone and Clay for Cement Purposes (MIN3)
- Military Bases & Prisons**
- Military Bases & Prisons: (SD6)
 - Kendrew Barracks (Cottesmore)
 - Stockton Prison
- Town Centres**
- Town Centre Areas (E9)
 - Primary Shopping Frontage (E10)
- Important Open Spaces & Frontages**
- Important Open Space (E12)
 - Important Frontage (E12)
- The Historic Environment**
- Conservation Area (EN15)
 - Article 4 Direction Area (EN15)
 - Scheduled Monument (EN15; EN16)
 - Registered Parks & Gardens (EN15)
- Reservoirs**
- Rutland Water Area (E6)
 - Recreation Areas: (E6)
 - A = Barnsdale
 - B = Whitwell
 - C = Sykes Lane
 - D = Normanton
 - E = Gibbet Lane
 - Eyebrook Reservoir Area (E6)
- Biodiversity & Geodiversity**
- Sites of International Importance for Nature Conservation:**
- Boundary to Rutland Water (RAMSAR) (EN9)
- Sites of National Importance for Nature Conservation:**
- Sites of Special Scientific Interest (SSSI) (EN9) and Rutland Water (SPA/SSSI)
- Sites of Local Importance for Nature Conservation:**
- Regionally Important Geological Site (RIGS) (EN9)
 - Local Wildlife Site (EN9)
 - Candidate Local Wildlife Site (EN9)
- Flood Zones**
- Flood Zone 2 (EN6)
 - Flood Zone 3 (EN6)
- Low Carbon Energy Generation Areas Suitable for Wind Turbine Developments (EN8)**
- Area 1: Suitable for small-sized turbines (single, small and small-medium groups); medium-sized turbines (single, small groups); and large-sized turbines (single).
 - Area 2: Suitable for small-sized turbines (single, small groups); and medium-sized turbines (single).

Maps to be read in conjunction with any Neighbourhood Plans that may have been prepared for the area.

Information on the Historic Environment and Biodiversity & Geodiversity Conservation correct at the time of preparation of the plan. The latest position can be checked with the Council.

Rutland Water - Inset 44

