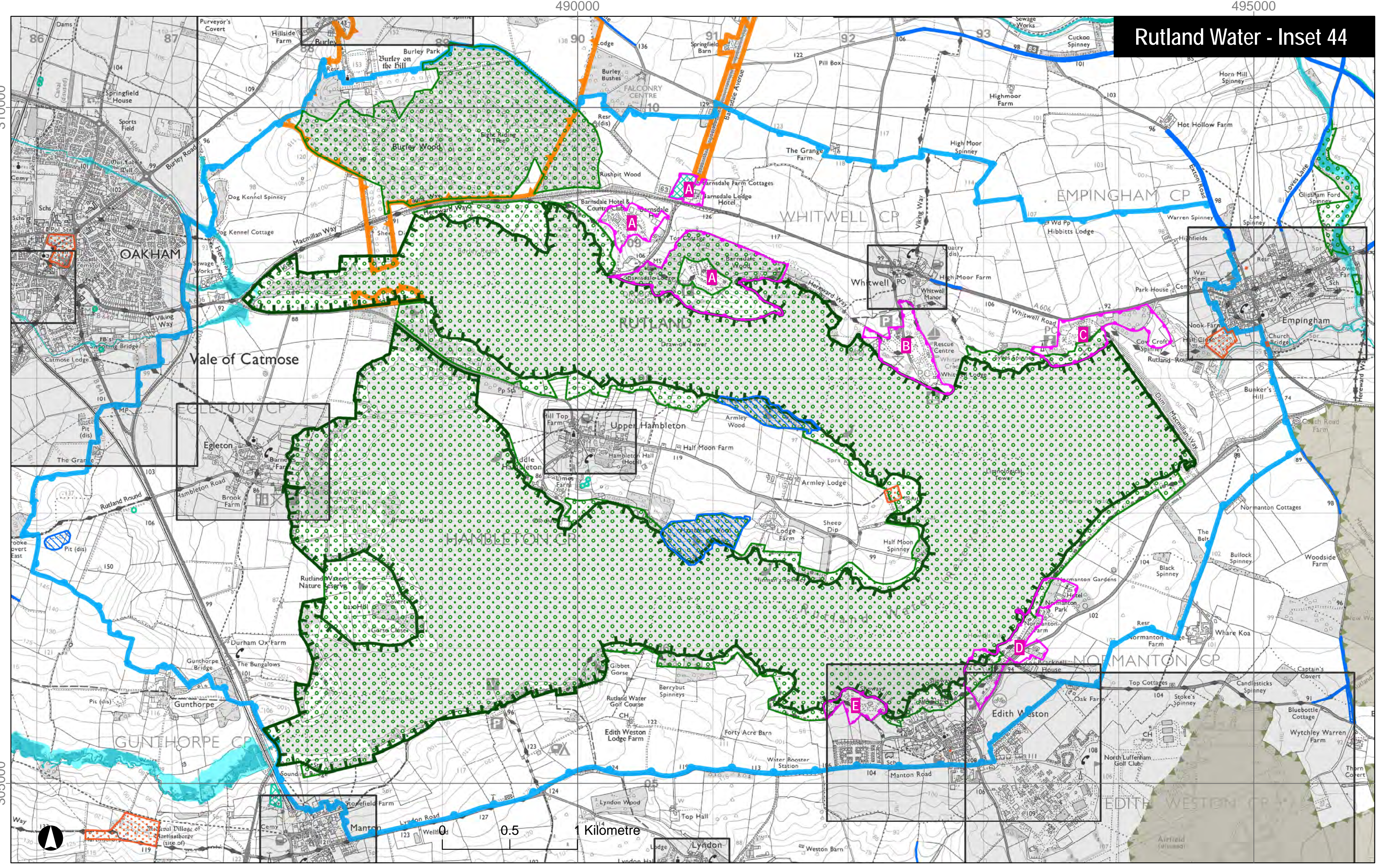
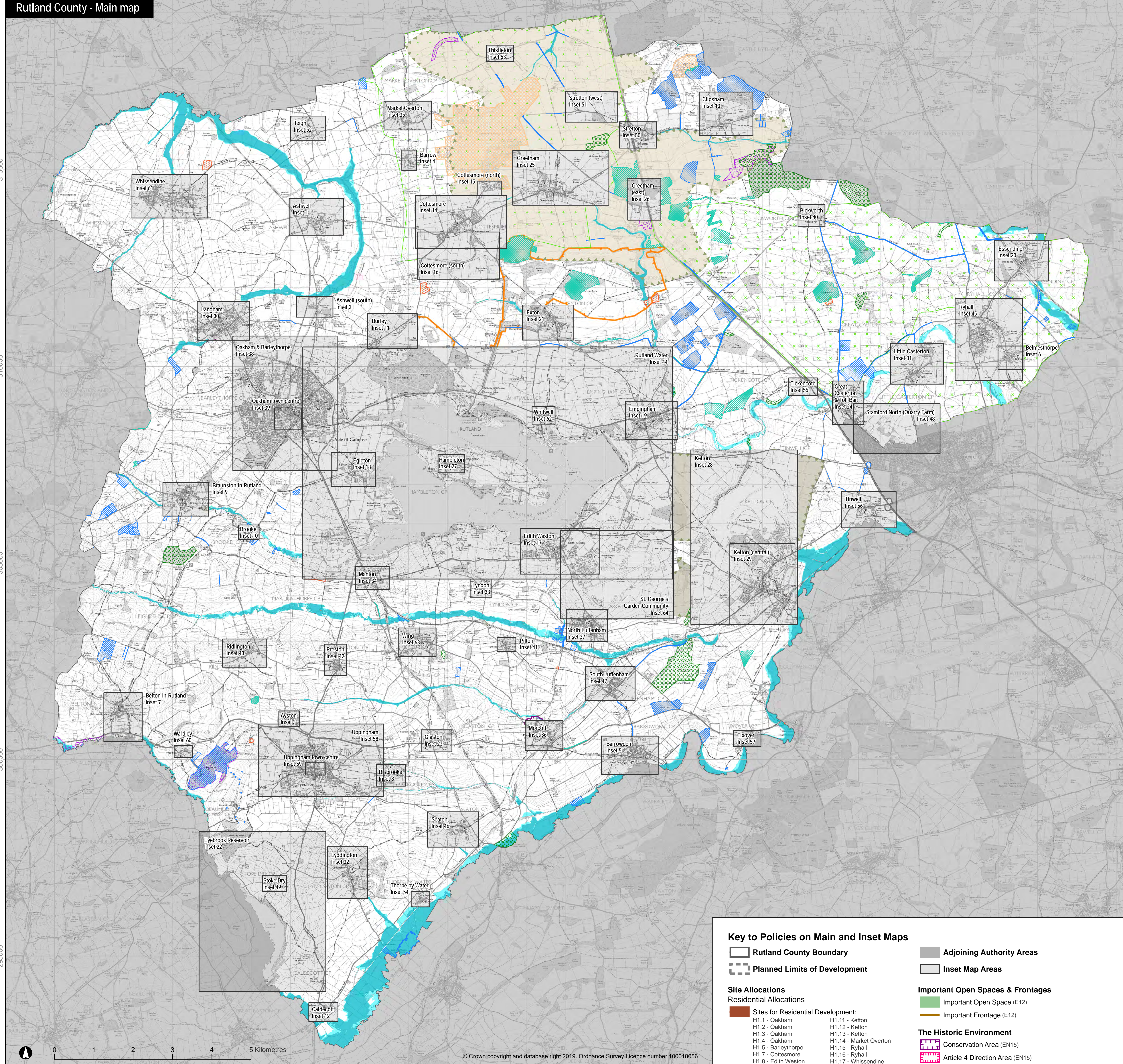


**Rutland County - Main map**



**Key to Policies on Main and Inset Maps**

- Rutland County Boundary
- Planned Limits of Development
- Adjoining Authority Areas
- Inset Map Areas

**Site Allocations**

**Residential Allocations**

- Sites for Residential Development:
  - H1.1 - Oakham
  - H1.2 - Oakham
  - H1.3 - Oakham
  - H1.4 - Oakham
  - H1.5 - Barleythorpe
  - H1.7 - Cottesmore
  - H1.8 - Edith Weston
  - H1.9 - Empingham
  - H1.10 - Empingham
  - H1.11 - Ketterton
  - H1.12 - Ketterton
  - H1.13 - Ketterton
  - H1.14 - Market Overton
  - H1.15 - Ryhall
  - H1.16 - Ryhall
  - H1.17 - Whissendine
  - H1.18 - Whissendine

**Stamford North (Quarry Farm)**

- Stamford North (Quarry Farm) (H4)

**Employment Allocations**

- Sites for Employment Development:
  - E1.1 - Uppingham
  - E1.2 - Oakham
  - E1.3 - Ketterton

**Retail Allocations**

- Sites for Retail Development:
  - R1 - Oakham

**St. George's Garden Community**

- St. George's Garden Community (H2; H3; E1)

**Waste Allocations**

- Sites for Waste Management & Disposal:
  - WST3.1 - Cottesmore
  - WST3.2 - Greatham
  - WST3.3 - Ketterton

**Minerals Allocations**

- Minerals Allocations:
  - MIN5 - Greatham
  - MIN6 - Stretton

**Minerals Safeguarding Areas**

- Limestone Aggregate (MIN3)
- Limestone and Clay for Cement Purposes (MIN3)

**Military Bases & Prisons**

- Military Bases & Prisons: (SD6)
  - Kendrew Barracks (Cottesmore)
  - Stockton Prison

**Town Centres**

- Town Centre Areas (E9)
- Primary Shopping Frontage (E10)

**Important Open Spaces & Frontages**

- Important Open Space (E12)
- Important Frontage (E12)

**The Historic Environment**

- Conservation Area (EN15)
- Article 4 Direction Area (EN15)
- Scheduled Monument (EN15; EN16)
- Registered Parks & Gardens (EN15)

**Reservoirs**

- Rutland Water Area (E6)
- Recreation Areas: (E6)
  - A = Barnsdale
  - B = Whitwell
  - C = Sykes Lane
  - D = Normanton
  - E = Gibbet Lane
- Eyebrook Reservoir Area (E6)

**Biodiversity & Geodiversity**

**Sites of International Importance for Nature Conservation:**

- Boundary to Rutland Water (RAMSAR) (EN9)

**Sites of National Importance for Nature Conservation:**

- Sites of Special Scientific Interest (SSSI) (EN9) and Rutland Water (SPA/SSSI)

**Sites of Local Importance for Nature Conservation:**

- Regionally Important Geological Site (RIGS) (EN9)
- Local Wildlife Site (EN9)
- Candidate Local Wildlife Site (EN9)

**Flood Zones**

- Flood Zone 2 (EN6)
- Flood Zone 3 (EN6)

**Low Carbon Energy Generation Areas Suitable for Wind Turbine Developments (EN8)**

- Area 1: Suitable for small-sized turbines (single, small and small-medium groups); medium-sized turbines (single, small groups); and large-sized turbines (single).
- Area 2: Suitable for small-sized turbines (single, small groups); and medium-sized turbines (single).

*Maps to be read in conjunction with any Neighbourhood Plans that may have been prepared for the area.*

*Information on the Historic Environment and Biodiversity & Geodiversity Conservation correct at the time of preparation of the plan. The latest position can be checked with the Council.*

Local Plan mapping produced by Nottingham City Council's GIS Team on behalf of Rutland County Council