

Date Reviewed: 25/10/18
 Officer initials: JB

Polling place / polling station – evaluation checklist

Part A – Current polling place details		
Polling place identifier	Uppingham Town Hall	
Polling place name	Uppingham Town Hall	
Polling place address	Uppingham Town Hall Town Hall High Street East Uppingham LE15 9PY	
Number of electors (If more than one polling station within the polling place, identify split of electors)	1885 1200	
Building availability for future elections/referendums	Yes	
Polling place review		
Check	√	Comment
• Are there suitable transport links?	√	Yes, by road.
• Are there any access issues regarding main/busy roads, railways, rivers, etc.?	√	No
• Is the polling place capable of accommodating more than one polling station together with the necessary staff and equipment? If so, could it accommodate all allocated voters going in and out of the polling stations, even where there is a high turnout?	√	Yes, currently two stations in main hall due to volume of electorate.
• Is the building readily available in the event of any unscheduled elections?	√	Yes
• Is there any possibility that the building may be demolished as part of a new development?	√	No

Identify any complaints/comments received from stakeholders at previous electoral events

Recommended for continued use.

Date reviewed:

Officer initials:

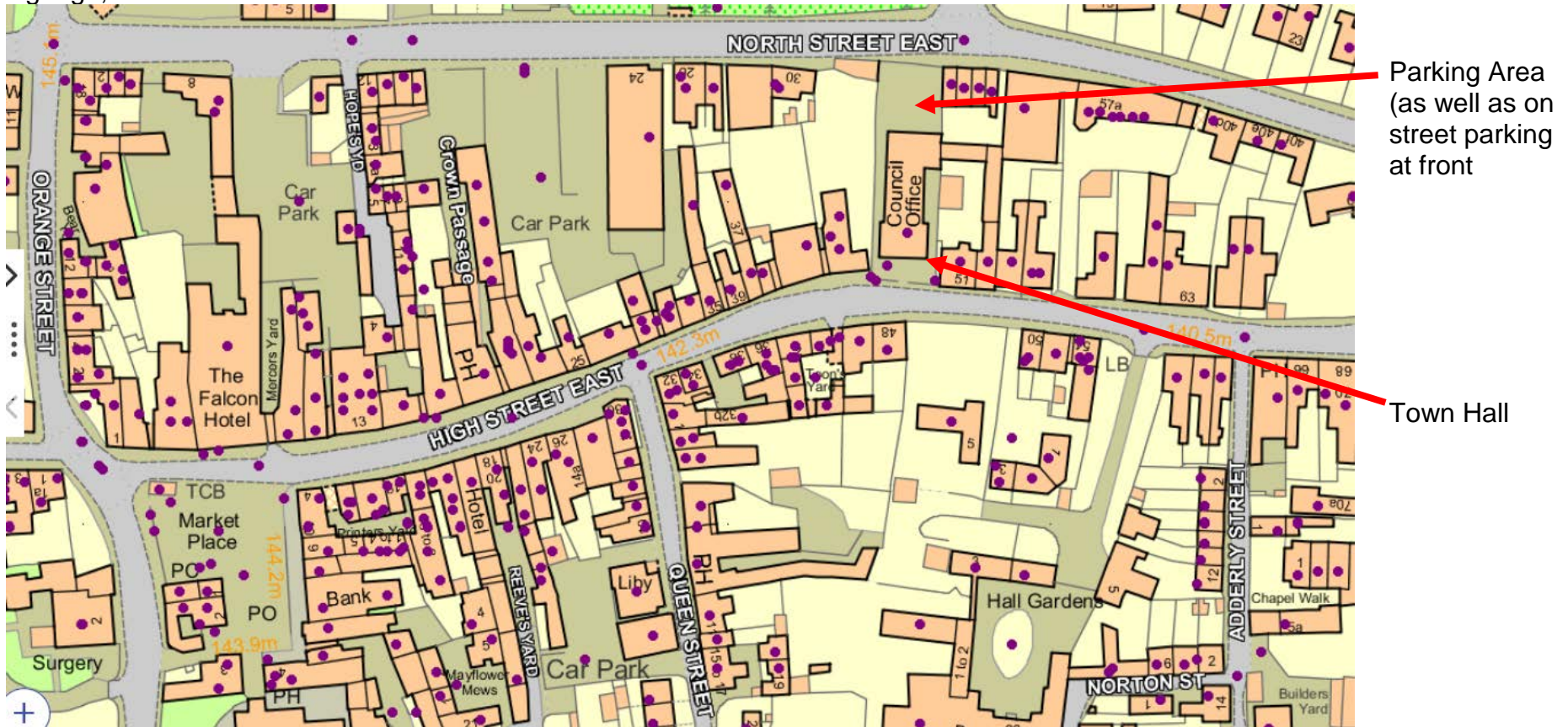
Part B – External areas access and facilities		
Check	(√)	Comments
<ul style="list-style-type: none"> Are there good public transport links to the polling place? 	√	Yes, by road
<ul style="list-style-type: none"> Is the approach to the building safe and free from obstructions and does it have a dropped kerb? 	√	Not from front entrance - wheelchair access from rear of building where there is no kerb to contend with. See pictures 1 - 3
<ul style="list-style-type: none"> Is the building clearly identifiable? 	√	Yes, see picture 4
<ul style="list-style-type: none"> Is additional signage required between street and entrance? 	√	No
<ul style="list-style-type: none"> Is there the facility to put up the required signage for polling day? 	√	Yes
<ul style="list-style-type: none"> Are there parking facilities for disabled people? 	√	Yes, see picture 5
<ul style="list-style-type: none"> Are there parking facilities for polling staff? 	√	Yes, to rear of building as above.
<ul style="list-style-type: none"> Does the approach to the building have external lighting? 	√	Yes
<ul style="list-style-type: none"> Does the building have level access? Yes/No. If no – Has a purpose built ramp been installed? If so, does it have a handrail? Does the ramp have a gentle slope? Does the building require a temporary ramp or is there an alternative disabled access? 	√	Yes, but approach from rear – signposted at station.
<ul style="list-style-type: none"> Is the entrance door wide enough for a disabled person using a motorised wheelchair? 	√	Yes
<ul style="list-style-type: none"> Are the doors light enough for frail/elderly voters to open? 	√	Yes
<ul style="list-style-type: none"> Can the 'Guidance for voters' notice be clearly displayed outside the premises, as required by the election rules? 	√	Yes
<ul style="list-style-type: none"> Are there any external security concerns? 	√	No
<ul style="list-style-type: none"> Can tellers be accommodated outside the building? 	√	Yes

Date reviewed:

Officer initials:

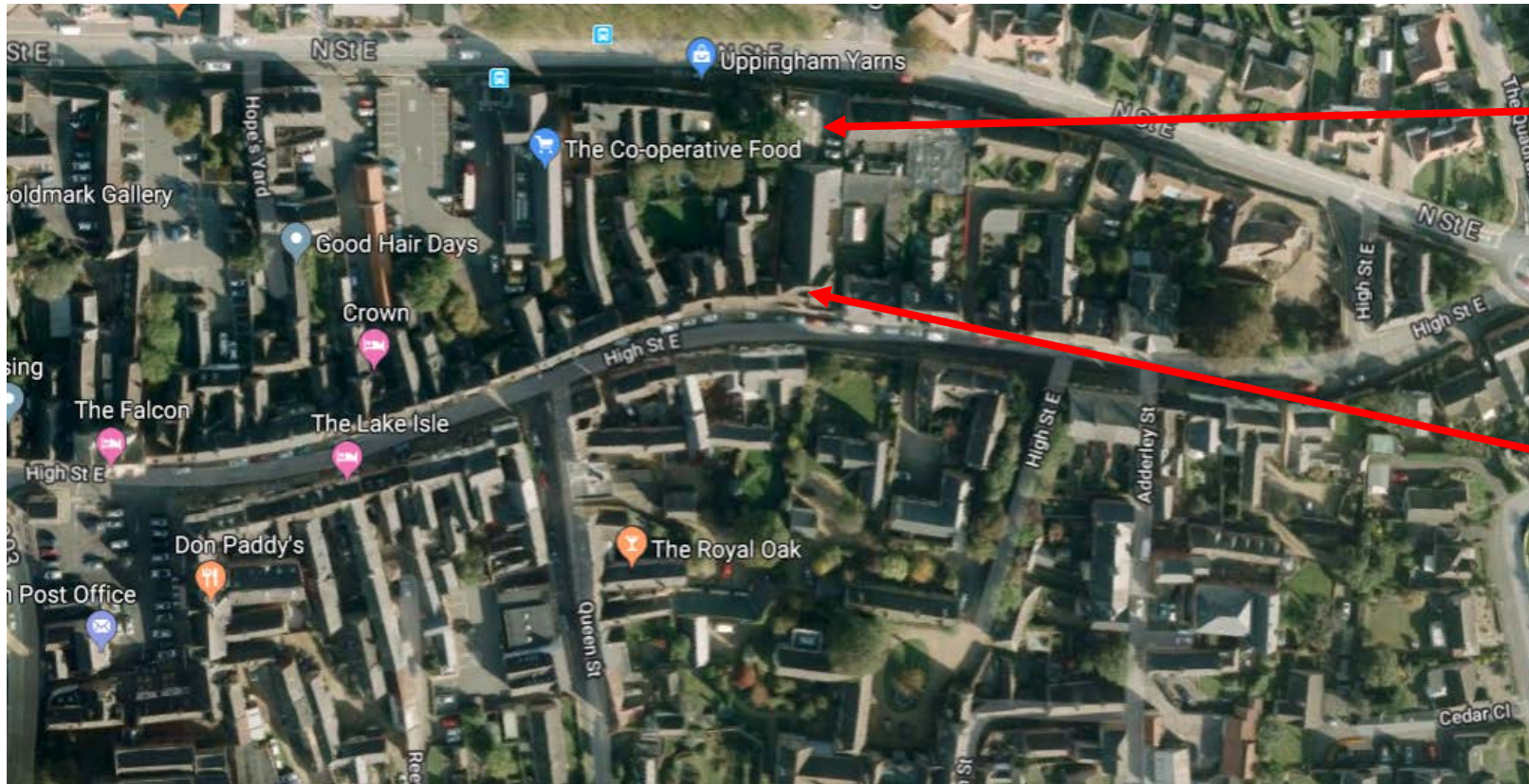
External plan – B1

Show external layout, street name(s), car parking (including disabled car parking), ramps, steps, lighting, appropriate places for signage, etc.



Date reviewed:

Officer initials:



Parking Area
(as well as on
street parking
at front

Town Hall

Date reviewed:

Officer initials:

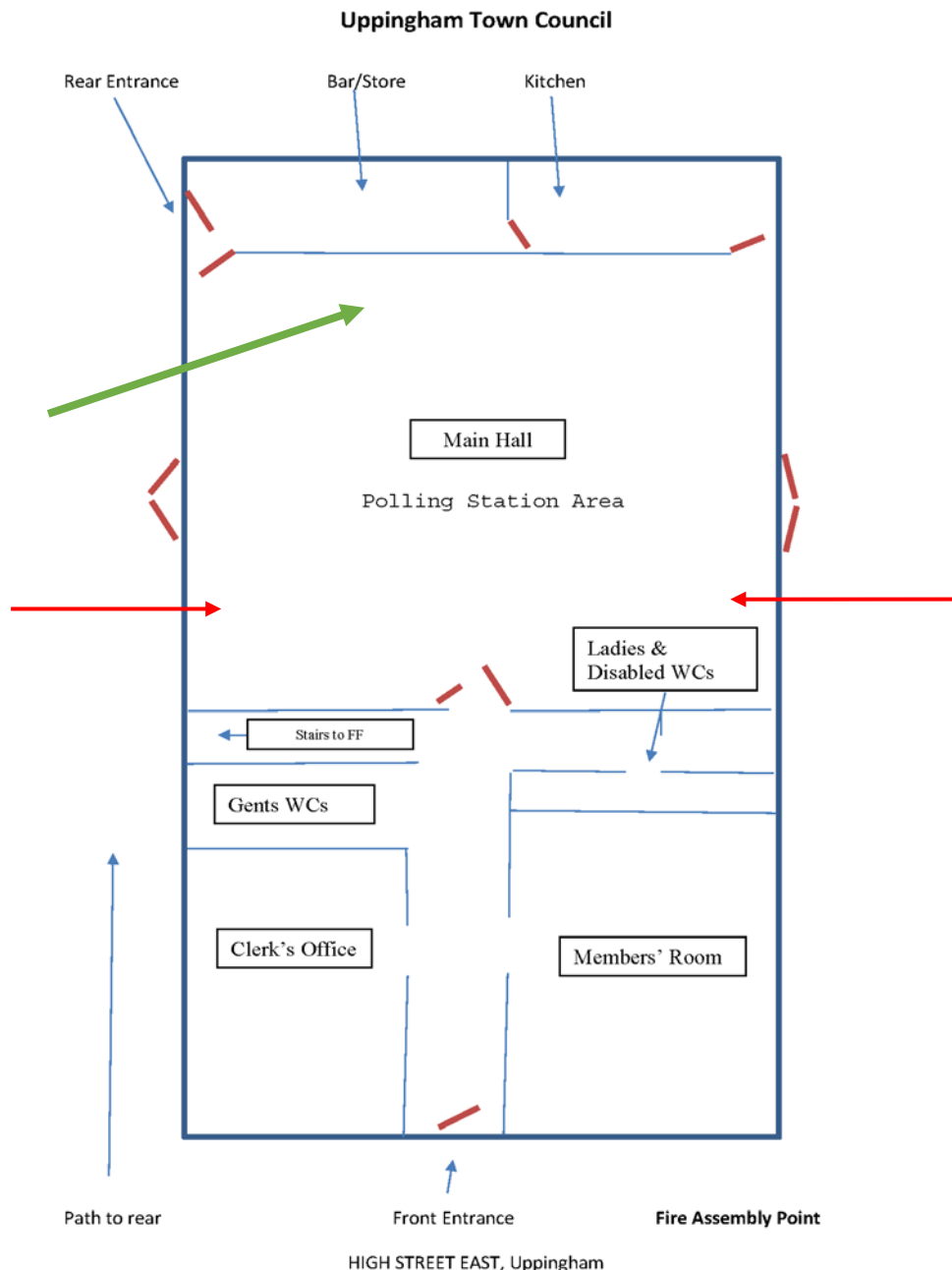
Part C – Internal areas access and facilities		
Check	(√)	Comments
• Are all doors easy to open (including by wheelchair users) or do they need to be permanently locked back?	√	Yes
• Are there any internal steps or obstructions/hazards?	√	No
• Are any doormats level with the floor?	√	Yes
• Is the floor covering non-slip (including in wet weather)?	√	Wooden
• Are there any corridors that may cause access problems?	√	No
• Is there adequate lighting in the corridors?	√	Yes
• Are there toilet facilities?	√	Yes see pictures 6 and 7
• Is there a kitchen that staff can use?	√	Yes, see pictures 8 and 9
• Is the area adequately lit for day and night time?	√	Yes
• Is there adequate space for signage?	√	Yes
• How many polling stations can the building accommodate?	√	Two easily, sufficient for current electorate.
• Does the building have a telephone available (land line) in the event of mobile network problems?	√	Yes, but mobile required for Presiding Officer as office not manned 24 hours.

Date reviewed:

Officer initials:

Internal access leading to polling station(s) – C1

Show internal areas of the building, excluding the actual polling station where voting will take place, including corridors that link to the polling station, kitchen and toilets, and highlight any possible signage requirements and potential hazards. Also indicate door swing direction and ease of opening, any areas of poor lighting, and any areas of uneven floor, etc.



For polling station use, the main hall is divided down the middle (separated by chairs), with ballot booths (green arrow) placed against rear wall (in front of kitchen/bar area). Presiding officers sit to the left and right of entrance indicated by red arrows.

Date reviewed:

Officer initials:

Part D – The polling station(s)		
Check	(√)	Comments
• Is there sufficient space to accommodate and manage the flow of a high volume of electors in the case of a high turnout of electors?	√	Yes, see pictures 10 and 11 (taken while decoration in progress)
• If multiple polling stations need to be provided, are there other rooms available, or can the space be clearly divided to provide adequate room for more than one polling station?	√	Large main hall sufficient to house 2 polling station required for electorate
• Is there sufficient space inside the polling station to comfortably accommodate staff, voters, polling agents and observers?	√	Yes
• Could ballot booths be positioned in a way that would preserve the secrecy of the ballot, even where there may be a high volume of electors?	√	Yes
• Is there adequate lighting for day and night time?	√	Yes
• Is there suitable furniture (tables and chairs) available for all types of election for polling staff and for those voters who may need to rest?	√	Yes
• Could motorised wheelchairs be accommodated?	√	Yes
• Can the official notices be clearly displayed, including the large-print version of the ballot paper(s)?	√	Yes

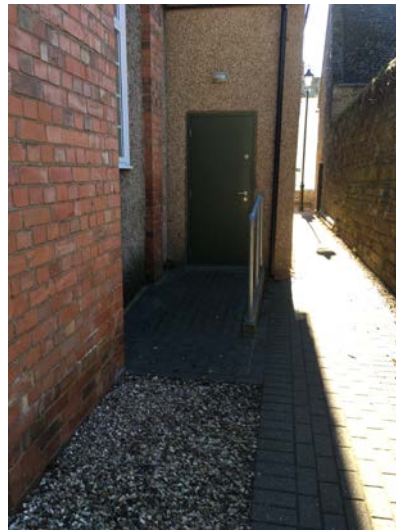
Date reviewed:

Officer initials:

Pictures:



Picture 1 – Approach for wheelchair access 1



Picture 2 – Approach for wheelchair access 2



Picture 3 – Approach for wheelchair access 3



Picture 4 – External view of venue

Date reviewed:

Officer initials:



Picture 5 – Car park/disabled spaces



Picture 6 – Toilets



Picture 7 – Toilets facilities



Picture 8 – Kitchen facilities

Date reviewed:

Officer initials:



Picture 9 – Kitchen facilities



Picture 10 – Main Hall area



Picture 11 – Main Hall area

Date reviewed:

Officer initials:

Part E – Comments from stakeholders during consultation

Comment	Name/organisation	Response by (A)RO

Additional comments from (A)RO