

Date reviewed: 10 October 2018

Officer initials: JB

Polling place / polling station – evaluation checklist

Part A – Current polling place details	
Polling place identifier	Ryhall Village Hall
Polling place name	Ryhall Village Hall
Polling place address	Ryhall Village Hall Church Street Ryhall Stamford PE9 4HR
Number of electors (If more than one polling station within the polling place, identify split of electors)	1329
Building availability for future elections/referendums	Yes

Polling place review		
Check	√	Comment
• Are there suitable transport links?	√	Good road access, parking facilities and bus stop opposite Hall. See Picture 1
• Are there any access issues regarding main/busy roads, railways, rivers, etc.?	√	No
• Is the polling place capable of accommodating more than one polling station together with the necessary staff and equipment? If so, could it accommodate all allocated voters going in and out of the polling stations, even where there is a high turnout?	√	Yes if required. See pictures 2 and 3.
• Is the building readily available in the event of any unscheduled elections?	√	Yes
• Is there any possibility that the building may be demolished as part of a new development?	√	No

Identify any complaints/comments received from stakeholders at previous electoral events

None that we are aware of, seems to be an excellent facility.

Date reviewed: 10 October 2018

Officer initials: JB

Part B – External areas access and facilities		
Check	(√)	Comments
<ul style="list-style-type: none"> Are there good public transport links to the polling place? 	√	Yes. Bus stop opposite entrance. See picture 1.
<ul style="list-style-type: none"> Is the approach to the building safe and free from obstructions and does it have a dropped kerb? 	√	Yes
<ul style="list-style-type: none"> Is the building clearly identifiable? 	√	Yes. See picture 4.
<ul style="list-style-type: none"> Is additional signage required between street and entrance? 	√	No
<ul style="list-style-type: none"> Is there the facility to put up the required signage for polling day? 	√	Yes
<ul style="list-style-type: none"> Are there parking facilities for disabled people? 	√	Yes, but not specific – plenty of parking available. See picture 4
<ul style="list-style-type: none"> Are there parking facilities for polling staff? 	√	Yes, see picture 4.
<ul style="list-style-type: none"> Does the approach to the building have external lighting? 	√	Yes, see picture 4.
<ul style="list-style-type: none"> Does the building have level access? Yes/No. If no – Has a purpose built ramp been installed? If so, does it have a handrail? Does the ramp have a gentle slope? Does the building require a temporary ramp or is there an alternative disabled access? 	√	Yes, additional level put on at request of parish council to allow wheelchair access through main door. See picture 5.
<ul style="list-style-type: none"> Is the entrance door wide enough for a disabled person using a motorised wheelchair? 	√	Yes, double door. See pictures 5 & 6.
<ul style="list-style-type: none"> Are the doors light enough for frail/elderly voters to open? 	√	Yes
<ul style="list-style-type: none"> Can the 'Guidance for voters' notice be clearly displayed outside the premises, as required by the election rules? 	√	Yes
<ul style="list-style-type: none"> Are there any external security concerns? 	√	No
<ul style="list-style-type: none"> Can tellers be accommodated outside the building? 	√	Yes

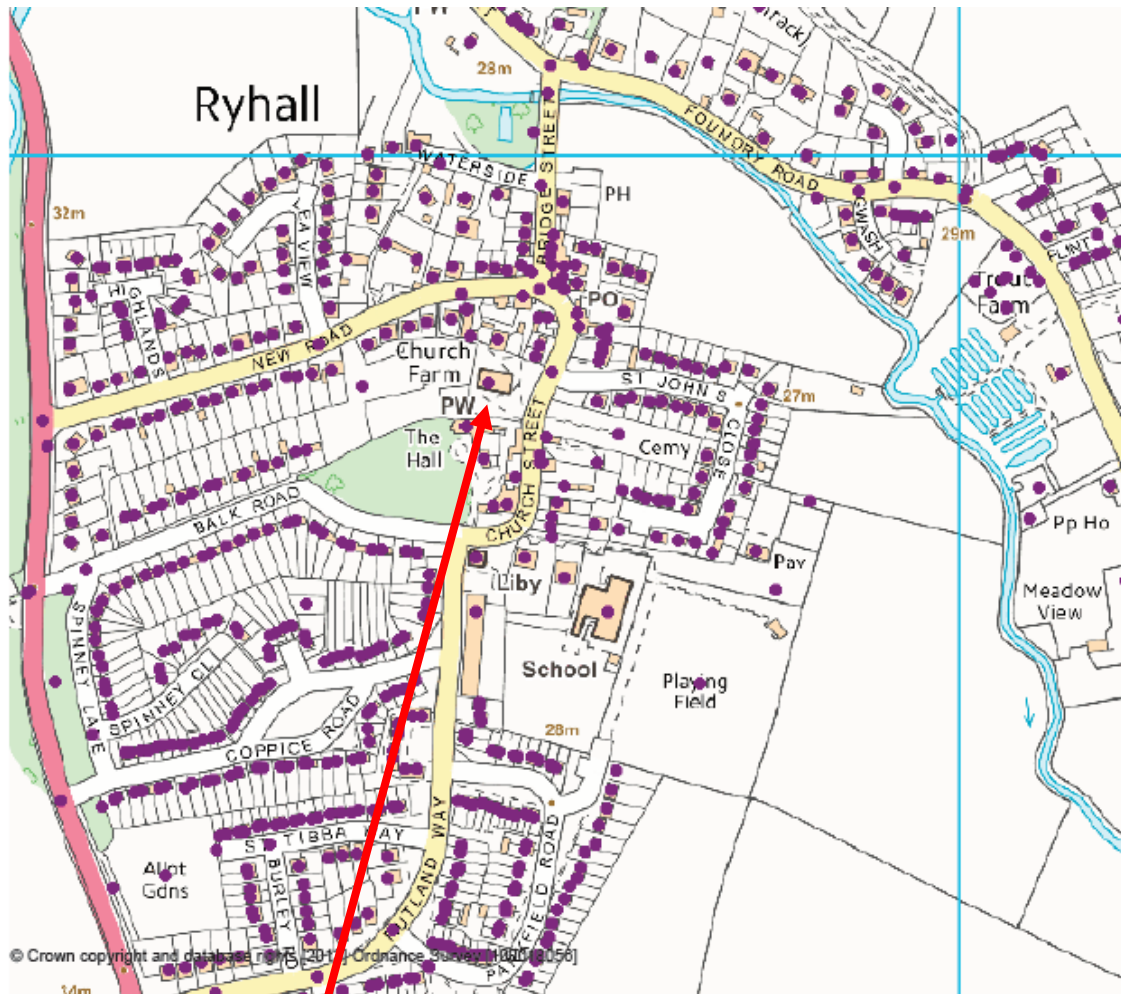
Date reviewed: 10 October 2018

Officer initials: JB

External plan – B1

Show external layout, street name(s), car parking (including disabled car parking), ramps, steps, lighting, appropriate places for signage, etc.

Ryhall - Village Hall



Village Hall is here

Date reviewed: 10 October 2018

Officer initials: JB

Satellite view from above village hall – entrance marked



Car Park

Bus Stop

Main entrance here

Date reviewed: 10 October 2018

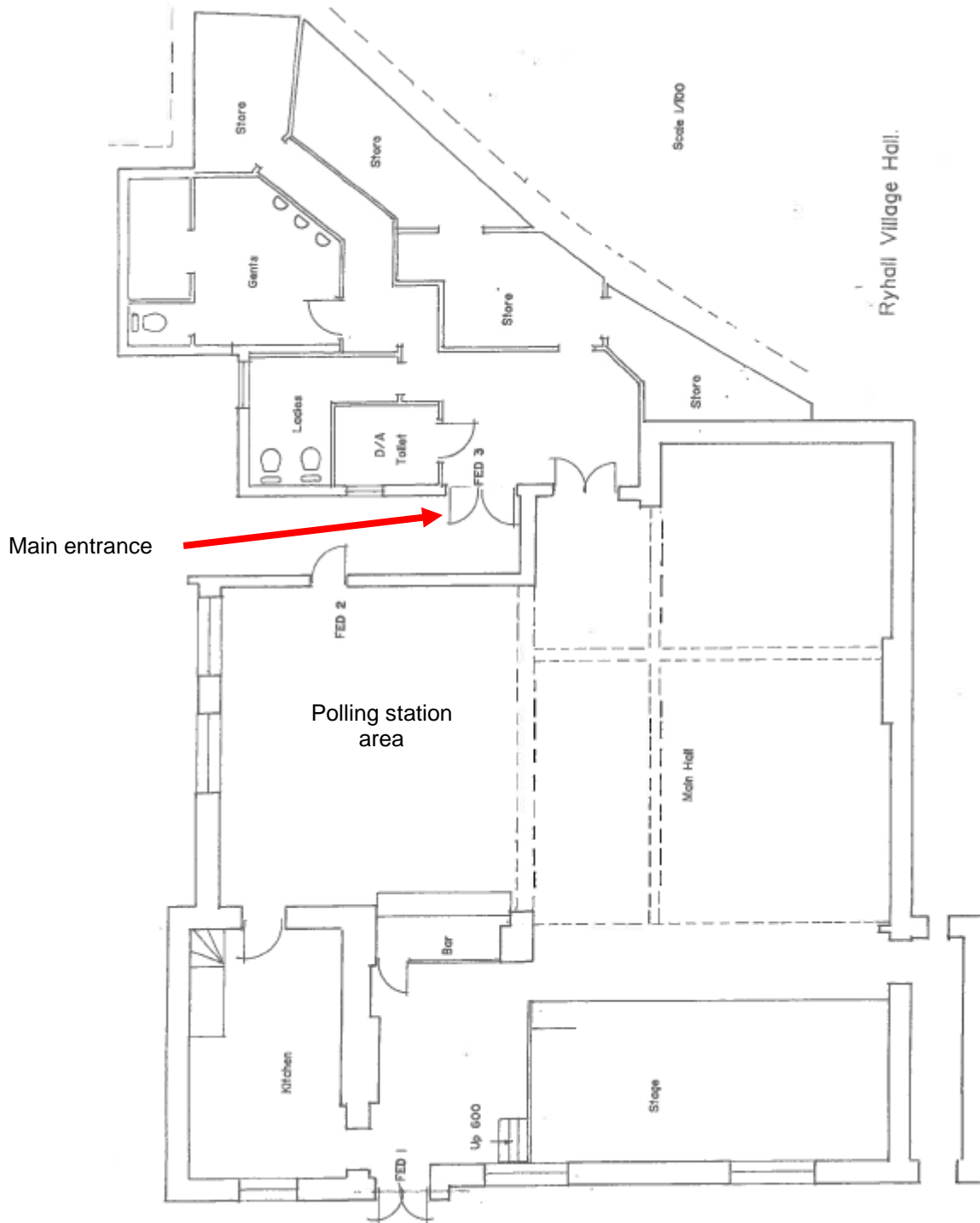
Officer initials: JB

Part C – Internal areas access and facilities		
Check	(√)	Comments
• Are all doors easy to open (including by wheelchair users) or do they need to be permanently locked back?	√	Yes
• Are there any internal steps or obstructions/hazards?	√	No
• Are any doormats level with the floor?	√	Yes
• Is the floor covering non-slip (including in wet weather)?	√	No, wooden hall.
• Are there any corridors that may cause access problems?	√	No
• Is there adequate lighting in the corridors?	√	Yes
• Are there toilet facilities?	√	Yes, see picture 7.
• Is there a kitchen that staff can use?	√	Yes, see pictures 8 and 9.
• Is the area adequately lit for day and night time?	√	Yes
• Is there adequate space for signage?	√	Yes
• How many polling stations can the building accommodate?	√	Two or more if required. See pictures 2, 3 and 10.
• Does the building have a telephone available (land line) in the event of mobile network problems?	√	No. PO required mobile phone.

Date reviewed: 10 October 2018

Officer initials: JB

Internal access leading to polling station(s) – C1



Date reviewed: 10 October 2018

Officer initials: JB

Part D – The polling station(s)		
Check	(√)	Comments
• Is there sufficient space to accommodate and manage the flow of a high volume of electors in the case of a high turnout of electors?	√	Yes
• If multiple polling stations need to be provided, are there other rooms available, or can the space be clearly divided to provide adequate room for more than one polling station?	√	Yes
• Is there sufficient space inside the polling station to comfortably accommodate staff, voters, polling agents and observers?	√	Yes
• Could ballot booths be positioned in a way that would preserve the secrecy of the ballot, even where there may be a high volume of electors?	√	Yes
• Is there adequate lighting for day and night time?	√	Yes
• Is there suitable furniture (tables and chairs) available for all types of election for polling staff and for those voters who may need to rest?	√	Yes
• Could motorised wheelchairs be accommodated?	√	Yes
• Can the official notices be clearly displayed, including the large-print version of the ballot paper(s)?	√	Yes

Date reviewed: 10 October 2018

Officer initials: JB

Internal – The polling station(s) – D1 (see C1 above)

Additional Pictures:



Picture 1 – Bus stop opposite Polling station



Picture 2 – Polling Station Area



Picture 3 – Polling Station Area



Picture 4 – Car Park and Front View



Picture 5 – Front Entrance



Picture 6 – Entrance to Main hall

Date reviewed: 10 October 2018

Officer initials: JB



Picture 7 – WCs



Picture 8 – Kitchen



Picture 9 – Kitchen



Picture 10 – Main Hall for additional station if required

Date reviewed: 10 October 2018

Officer initials: JB

Part E – Comments from stakeholders during consultation

Comment	Name/organisation	Response by (A)RO

Additional comments from (A)RO