



# Rutland County Council

## **HECA Progress Report for Rutland**

**20/3/17 version 1**

**March 2017**

# Contents

	<i>Page</i>
1. Introduction .....	3
2. Fuel poverty .....	4
3. Energy efficiency of properties in Rutland.....	8
4. Delivery of the HECA Action Plans .....	9
Appendix 1 HECA Action Plan 2017	21
Appendix 2 Glossary.....	29

# 1. Introduction

- 1.1 There are many advantages from improving household energy efficiency. These include lower energy bills, improved health and wellbeing and reduced carbon emissions. The Council signed the Nottingham Declaration on Climate Change in 2007, committing the Council to working with partners to address climate change and combat fuel poverty.
- 1.2 In order to meet national targets in the Climate Change Act 2008 to reduce our carbon emissions by 80% from 1990 levels by 2050, we will need to reduce our demand for energy generated from fossil-fuels by increasing our energy efficiency and by increasing the proportion on energy we produce from renewable resources, to help limit further changes in our climate and improve our energy security and resilience.
- 1.3 The Government, using [guidance](#) issued under the Home Energy Conservation Act 1995 (HECA), asked councils to prepare and submit a 'HECA further report' by 31 March 2013 setting out the energy conservation measures that they consider practicable, cost-effective and likely to result in significant improvement in the energy efficiency of residential accommodation in their area. Councils are then expected to submit progress reports on the original 'further report' every two years until 31 March 2027. This provides an opportunity to update the targets if necessary, taking account of changes to Government policy and updating the help available for households in fuel poverty.
- 1.4 The Council's [HECA Further Report 2013](#) provided a sound basis for the new HECA programme and an updated and more concise version of the Action Plan was carried forward in the [HECA Progress Report 2015](#). This approach is continued in this HECA Progress Report 2017. We have updated some actions to reflect changes in funding streams and in Government priorities. We have taken account of '[Cutting the cost of keeping warm – A fuel poverty strategy for England](#)', published by the Government in March 2015. We have also taken into account the envisaged impact of the [Government's 'ECO: Help to Heat' proposals \(June 2016\)](#), the [Government's response to the consultation thereon \(January 2017\)](#) and [the revised HECA Guidance to English Energy Conservation Authorities issued on 4 January 2017](#). We note that there are initiatives in the Fuel Poverty Strategy for England to reduce fuel poverty in homes which do not currently have a gas supply. This can be a significant problem in the more rural areas of Rutland.
- 1.5 The key actions/measures to alleviating fuel poverty and improve household energy efficiency are taken forward from the HECA Further Report 2013 are still relevant. These are to:

1. Increase energy efficiency of homes through:
  - a. Installation of energy efficiency infrastructure improvements
  - b. Householders changing to more energy efficient behaviours
2. Increase household incomes ensuring householders are aware of any benefits they are eligible for;
3. Reduce household debt by providing advice to assist with financial literacy and ensuring householders understand their energy bills;
4. Ensure residents are on a low cost tariff which is appropriate for their energy needs;
5. Explore ways of reducing fuel poverty that involve the whole community, including community groups and town and parish councils.

## 2. Fuel poverty

2.1 Through the Energy Act 2013, the Government has changed the definition of fuel poverty in England to the Low Income High Costs Indicator (LIHC). Using LIHC, a household is considered to be fuel poor if:

- they have required fuel costs that are above average (the national median level)
- were they to spend that amount, they would be left with a residual income below the official poverty line.

2.2 The table immediately below shows the performance against the new LIHC target used for England. The figures are published by the Government approximately two years after the period covered.

*Proportion of households that are fuel poor*

	2011	2012	2013	2014
Rutland	13.6%	11.9%	9.3%	10.6%
East Midlands	13.3%	13.2%	10.4%	10.1%
England	11.1%	10.8%	10.4%	10.6%

2.3 There was a slight increase in fuel poverty in Rutland between 2013 and 2014 according to the Government's model, which was also the case with the Council's four rural neighbouring councils which have broadly similar housing stocks.

## 2.4 **Location of fuel poverty within Rutland**

- 2.5 National models of fuel poverty do not produce accurate results for individual Rutland Wards, largely because there are many historic, solid walled properties in Rutland in rural areas which can distort the figures. These are often off-gas and are expensive to heat, but are also well placed in the property market and typically (although not always) have owners who can afford to heat them. The alternative regional model below is thought to best reflect the situation in Rutland, balancing the challenges of these off-gas rural properties alongside the poverty encountered by people on lower incomes in urban properties.

### **Rutland Wards in order of level of households being in, or at risk of, fuel poverty (highest first, source: HI4EM 2011 model)**

Uppingham, Oakham North West, Oakham North East, Oakham South West, Martinthorpe, Braunston and Belton, Oakham South East, Ryhall and Casterton, Exton, Normanton, Ketton, Langham, Greetham, Whissendine, Lyddington, Cottesmore.

- 2.6 The percentages have not been listed above to avoid confusion with the Government's official fuel poverty indicator, but the level of the highest risk area is approximately twice that of the lowest risk. The relative position of Oakham North West will have improved since 2011 due to the recent construction of many new properties in that Ward.

## 2.7 **Fuel poverty and health and wellbeing**

- 2.8 The Council recognises the threat cold or damp homes can pose to vulnerable people, through depression, stroke, heart disease and pneumonia. These can contribute to excess winter deaths. Fuel poverty can also affect the health and educational attainment of children. Rutland's Health and Wellbeing Board's Joint Health & Wellbeing Strategy 2016-2020 includes two priorities relevant to the reduction of fuel poverty: extending healthy life expectancy and reducing health inequalities. The importance of warm homes is referred to in the Director of Public Health's Annual Report 2016 produced as part of the Council's public health duties and in the Joint Strategic Needs Assessment. The Council's new Community Prevention and Wellness Services, which begin on 1 April 2017, will signpost people to relevant energy services and to services which can help to maximise income. This is a particular issue for the 7% of households in Rutland and Melton Constituency (CAB, June 2015) who are on prepayment meters, such as card meters, where households are likely to be poorer, have to pay more for what they do use and are at risk of "self-disconnection" if they cannot afford to keep in credit.

- 2.9 The HECA Progress Report Action Plan will help to deliver one of the preventative 'Concrete Actions' proposed in the Sustainability and Transformation Plan (STP) for Leicester, Leicestershire and Rutland: "Wider determinants of health: Create an environment that supports community health and builds health into the local area, making healthy behaviour the norm, working with planning, housing, air quality and transport to maximise health benefit and which in the long term will have an impact on mortality."
- 2.10 Suitable, warm housing is also key to the STP's "home first" model as this helps people to remain at home for longer, or to be discharged home more quickly.
- 2.11 Addressing fuel poverty is also a target for the Council's Child Poverty Strategy, Housing and Homelessness Strategy 2017-22 and Private Sector Housing Renewal Policy. Fuel poverty is being considered as part of the Council's Scrutiny review of poverty in Rutland.
- 2.12 The Government's public health outcomes indicators are grouped into four domains. Three of these are relevant to fuel poverty and are shown below in **bold**, with the 14 most relevant indicators listed underneath them.

- **Improving the wider determinants of health**

- fuel poverty
- children in poverty
- school readiness
- pupil absence
- sickness absence rate
- social isolation

- **Health improvement**

- child development at 2 - 2½ years
- self-reported well-being
- injuries due to falls in people aged 65 and over

- **Healthcare public health and preventing premature mortality**

- under 75 mortality rate from cardiovascular diseases (including heart disease and stroke)
- under 75 mortality rate from respiratory diseases

- health-related quality of life for older people
- hip fractures in people aged 65 and over
- excess winter deaths.

### **2.13 Working in partnership to tackle fuel poverty**

- 2.14 The Council has worked closely with a range of partners to combat fuel poverty, including initiatives supported by the High Sheriff of Rutland's Fund and Citizens Advice Rutland regarding debt and welfare advice.
- 2.15 Around 450 home energy audits were carried out between September 2012 and June 2015, to facilitate energy saving practices and measures and to encourage switching fuel suppliers to save money. This was in partnership with the Oakham-based charity Change Agents. There was an emphasis both on people at risk and on property types/areas which were particularly likely to have fuel poverty. This worked successfully, but the focus on home visits was not sustainable over the long term given the current financial climate.
- 2.16 We will continue to work to increase awareness and education of those in fuel poverty, educating them on wise use of energy, energy efficiency strategies, assisting families to reduce their fuel bills. We also encourage switching fuel suppliers to get the best deal, uptake of insulation options and awareness amongst social care and welfare professionals and volunteers.
- 2.17 We are working with a nearby council with the aim of rolling out a successful partnership to Rutland, which would allow home energy assessments, advice and switching to be provided for a quota of households. This would produce savings for the households at no additional cost to the councils.
- 2.18 A number of oil bulk buying clubs also cover Rutland. These measures can help Rutland residents heat their homes to adequate levels affordably and reduce their energy use, thereby reducing the cost of their energy bills and reducing carbon emissions, whilst also improving the local environment.
- 2.19 The Council is committed to working with community groups and town and parish councils to reduce fuel poverty. Extensive partnership working took place through the Energy Action for Rutland project with groups providing services for older people and we will build on this work. Greetham Parish Council has an Energy Focus Group and has recently carried out an energy survey. We will liaise with parish and town councils (for instance, through the Parish Forum) about opportunities for partnership and volunteering. We will also look for opportunities for this work to be combined with other local environmental initiatives.

### 3. Energy efficiency of properties in Rutland

- 3.1 When a property is sold or rented, it has to have an Energy Performance Certificate (EPC) which is recorded ('lodged') on a national database. The EPC provides an energy efficiency rating for a property on a scale of 1 to 100, based on the reduced Standard Assessment Procedure (rdSAP). These are placed into bands, with 'A' having the best performance and 'G' the poorest.
- 3.2 The tables below shows the approximate EPC ratings for the housing stock in Rutland in 2012 and 2015, so that the gradual improvement can be seen over time. These have been weighted by tenure to adjust for the fact that rented and new build properties are more likely to have had EPC assessments than existing owner-occupied properties (which may have been last sold before certificates were required). Some properties will have been surveyed more than once so some superseded results will have been included in the tables below which may understate the improvement in existing properties, but the weighting ensures that the overall housing numbers are in line with the total properties in Rutland.

Property Ownership	Estimated energy efficiency of dwellings in Rutland in 2012								Total
	rdSAP 92+	rdSAP 81-91	rdSAP 69-80	rdSAP 55-68	Rated A to D	rdSAP 39-54	rdSAP 21-38	rdSAP 1-20	
	A	B	C	D		E	F	G	
Existing owner-occupied dwellings	0	193	2,650	4,458	65%	2,634	1,103	260	11,298
Recently constructed dwellings (all ownerships)	5	172	103	1	100%	0	0	0	281
Rental (private / tied)	0	102	732	788	58%	700	371	118	2,811
Rental (social)	0	196	829	432	84%	204	59	20	1,740
<b>Total</b>	<b>5</b>	<b>663</b>	<b>4,314</b>	<b>5,679</b>	<b>66%</b>	<b>3,538</b>	<b>1,533</b>	<b>398</b>	<b>16,130</b>

Source: HECA Background Paper for Rutland (December 2012) Table 6.5 (EPC data from Landmark), weighted by CLG Live Table 100 for 2012 and Census tenure figures to provide estimated ratings for stock as a whole.



Property Ownership	Estimated energy efficiency of dwellings in Rutland in 2015								Total
	rdSAP 92+ A	rdSAP 81-91 B	rdSAP 69-80 C	rdSAP 55-68 D	Rated A to D	rdSAP 39-54 E	rdSAP 21-38 F	rdSAP 1-20 G	
Exiting owner-occupied dwellings	3	213	2,628	4,591	66%	2,586	1,030	247	11,298
Recently constructed dwellings (all ownerships)	6	715	124	2	99%	4	3	0	854
Rental (private / tied)	0	95	686	789	59%	656	336	106	2,668
Rental (social)	0	202	851	480	85%	201	57	19	1,810
<b>Total</b>	<b>9</b>	<b>1,225</b>	<b>4,289</b>	<b>5,862</b>	<b>68%</b>	<b>3,447</b>	<b>1,426</b>	<b>372</b>	<b>16,630</b>

Source: 2012 table above, with updated estimate to 2015 derived from Government & Spire Homes EPC statistical tables for Rutland and CLG Live Table 100.

## 4. Delivery of the HECA Action Plans

- 4.1 We have revised our Action Plan to reflect the Government's latest approach to fuel poverty and to ensure that our targets are clear and focused. This includes the Government's revision of the Energy Company Obligation (ECO), which requires energy companies to provide energy efficiency and fuel poverty measures, to 2022.
- 4.2 From January 2013 to September 2016, there were 613 ECO measures installed in Rutland (Table 2.2.1, Household Energy Efficiency National Statistics, December 2016). The lifetime carbon saving per measure is around 15 tonnes of CO<sub>2</sub> (same source, estimated using Executive Summary), or approximately 9,000 tonnes over the lifetime of all measures installed in Rutland to date. The national average cost of installing an ECO measure is around £1,700.<sup>1</sup> This is incurred by suppliers, but passed onto almost all customers through their bills.

<sup>1</sup> The national cost of delivering ECO was £2,526 million up to the end of June 2015 (see House of Commons Briefing Paper on ECO, December 2015). 1,501,390 ECO measures were installed up to the end of June 2015 (source Table 6, ECO and Green Deal Statistics, November 2015).

- 4.3 The ECO is likely to be renamed to the Fuel Poverty Obligation from late 2018. The Government envisages its key principles will be to:
- focus on households who are most in need;
  - simplify and remove complexity, improving cost effectiveness;
  - encourage greater involvement of local actors [stakeholders]; especially where vulnerability is a concern; and
  - reduce carbon emissions and make progress towards carbon budgets.

- 4.4 More than two million low income households per year would continue to be helped over the medium term with a £140 rebate on their energy bills through the Warm Home Discount (WHD), to assist with the affordability of energy bills.

#### **4.5 Local energy efficiency ambitions and priorities**

- 4.6 The Government's latest guidance on HECA suggests that local authorities state how they intend to make use of local flexibility of the proposed Fuel Poverty Obligation. The Council will prioritise in line with its Private Sector Housing Renewal Policy 2009 (or any relevant successor document). This policy states that the main priorities for the Council are to:

- a. reduce the number of fuel poor households;
- b. improve levels of energy efficiency in private sector housing and reduce carbon dioxide emissions;
- c. target resources to households on specified benefits, to older households and lower income households with children.

- 4.7 The policy also prioritises independent living.

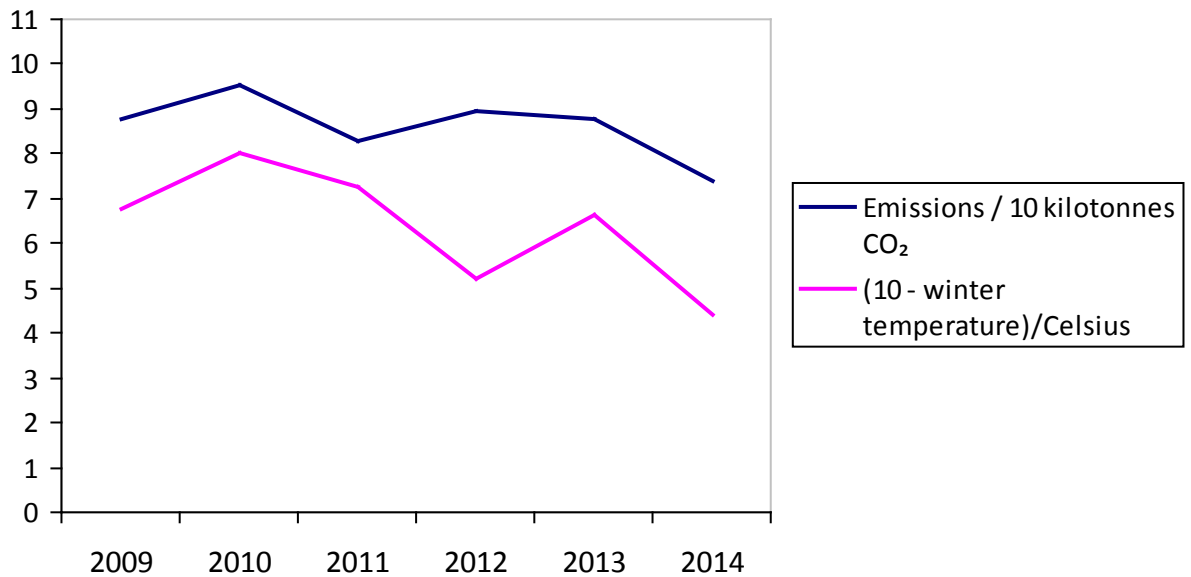
- 4.8 The Council signed the Nottingham Declaration on Climate Change in 2007, committing the Council to working with partners to address climate change and combat fuel poverty. The graph in section 4 shows the level of Carbon emissions over time. The table in section 2 shows the level of fuel poverty over time.

#### **4.9 Progress against the HECA Action Plan**

- 4.10 Government figures show that domestic CO<sub>2</sub> emissions in Rutland (essentially arising from domestic fuels either at the power station or when burnt at home) have fallen from 87,673 tonnes in 2009 to 73,729 tonnes in 2014, which is a fall of 16%. When we compare these with an upside-down temperature line

(which goes up on the graph in cold years when demand for heating is likely to be higher), it seems likely that recent mild winters have been a major factor in this reduction of domestic emissions.

### Domestic carbon emissions in Rutland alongside an inverted winter temperature line



*Source: UK local authority and regional carbon dioxide emissions national statistics: 2005-14 and Midlands Mean Temperature: Areal series, starting from 1910 (Met Office).*

- 4.11 The HECA Progress Report 2015's main Action Plan was a concise revision of the Action Plan from the HECA Further Report 2013. The tables below show progress against the 2015 Action Plan, with the same headings for each thematic table. The target reference numbers are carried forward from the 2013 report, for ease of reference. The future Objectives are highlighted in pale orange, or in grey where a target is no longer needed.
- 4.12 For clarity, the same future Objectives are shown in a separate set of forward-looking tables in Appendix 1, along with the detailed Actions needed to achieve these. The format of the future targets has also been revised to make a clearer distinction between Objectives and Actions.

#### 4.13 Local energy efficiency ambitions and priorities

OBJECTIVE	DELIVERY	TIMING	PROGRESS / STATUS
<p>1.3 [2015:] Seek to reduce domestic carbon emissions in Rutland by 34% from 1990 levels [by 2020] OR We will seek to reduce carbon emissions in the housing sector by 24% on 2009 levels by 2027</p>	<p>RCC Places Directorate</p>	<p>2027</p>	<p>HECA data shows that home energy efficiency in Rutland improved by 17.0% in 1996 to 2004. However, differences in methodology and the absence of data from 1990-1996 mean that the first of the two options for 1.3 is not readily measurable at a local level.</p> <p>Domestic CO<sub>2</sub> emissions in Rutland fell by 16% between 2009 &amp; 2014, although some of this may be weather related.</p>
<p>2017: We will seek to reduce carbon emissions in the housing sector by 24% on 2009 levels by 2027</p>			
<p>1.5 [2015:] Ensure that as many fuel poor homes as reasonably practicable achieve a minimum energy efficiency rating of...</p> <p>Band E by 2020 Band D by 2025 Band C by 2030</p>	<p>RCC Places Directorate and all partners, including energy companies and national Government.</p>	<p>2020, 2025 and 2030 respectively.</p>	<p>EPC performance is shown in section 3 of this Progress Report. The national target is difficult to measure at a local level, due to difficulties defining 'reasonably practicable' and in matching fuel poor households against specific energy bands at a local level.</p> <p>In 2015, 68% of properties had a minimum energy rating of Band D and 33% were a minimum of Band C.</p> <p>In 2014, 10.6% of households were fuel poor.</p>
<p>2017: Revise as: "75% of all properties to achieve a minimum energy rating of Band D by 2020. 40% of all properties to achieve a minimum energy rating of Band C by 2025. Reduce proportion of households that are fuel poor to 9% by 2020 and 8% by 2025."</p>			

#### 4.14 Data and assessment

OBJECTIVE	DELIVERY	TIMING	PROGRESS / STATUS
2.1 [2015:] Improve the energy efficiency of residential housing by provision of Household Energy Audits	Target deleted	Target deleted	Around 450 energy audits completed September 2012 to June 2015. Focus is now on improving access to existing advice to make best use of existing resources.
2017: Target deleted			
2.2 [2015:] Improve the energy efficiency of residential housing by provision of Electricity Monitoring Kits to encourage energy efficient behaviour	Target deleted	Target deleted	Target delivered. Loan kits remain available through libraries and have been promoted locally. It is envisaged that they will remain available until the roll-out of smart meters is sufficiently complete (perhaps by around 2020).
2017: Target deleted			
4.4 [2015:] Monitor the uptake of renewable technologies and the Feed-in Tariff scheme in the county of Rutland through data available from the Ofgem database for the Feed-in Tariff [FIT] and from the Council's Building Control and/or Planning Permission records	RCC Planning Policy	Already commenced – review September 2018.	<p>Domestic photovoltaic installations with FIT increased from 529 at June 2014 to 809 at June 2016. There were 2 domestic wind turbines at both dates (<i>Govt. FIT statistics</i>). A significant part of this increase is due to new build dwellings.</p> <p>A new FIT scheme began in February 2016, with much lower amounts of income receivable for electricity from new installations which may impact on future development, as may the Government's proposed move away from the current ECO subsidies for renewables and new build.</p> <p>Building Control Records show completed applications specifically for solar panels as follows:</p>

OBJECTIVE	DELIVERY	TIMING	PROGRESS / STATUS
2017: Target retained			2011/12: 17 2012/13: 4 2013/14: 2 2014/15: 2 2015/16: 3
5.3 [2015:] Monitor the uptake of renewable heat technologies in the county of Rutland through data available from the Renewable Heat Incentives scheme register (when available) and from the Council Building Control and/or Planning Permission records	RCC Planning Policy	Already commenced – review September 2018.	As of July 2014, 15 householder RHPP vouchers had been redeemed. Between April 2014 & June 2016, 55 domestic installations had been accredited under the new version of domestic RHI ( <i>source: Govt RHI statistics</i> ).  Building Control information is given at target 4.4 above.
2017: Target retained			
7.1 [2015:] Establish and maintain data on the energy efficiency rating of residential accommodation within the county of Rutland, including data from the Energy Performance Certificate (EPC) Registry	RCC Places Directorate and partners	November 2017	Data collected and updated using statistical tables from the Government and Spire Homes, as shown in HECA Progress Report 2017. The Government is introducing a new process for councils to obtain the full EPC dataset, which is not yet in place.
2017: Target retained			

#### 4.15 Public information and promotion

OBJECTIVE	DELIVERY	TIMING	PROGRESS / STATUS
<p>[2015:] Provide information to residents and (where applicable) businesses on:            (3.3) the Green Deal;            (3.4) ECO;            (5.1) available renewable heat technologies, the domestic Renewable Heat Incentive and microgeneration through the Green Deal;            (7.2) DirectGov's EPC advisor tool</p>	<p>RCC Places Directorate and partners, including the Community Prevention and Wellness Services</p>	<p>Already commenced – review September 2018.</p>	<p>The Green Deal no longer really exists for new installations. (It may be relaunched as a private sector loan.)</p>
<p>2017: Delete target 3.3.</p>			<p>149 ECO measures installed in Rutland homes in 2015.             Information shared as appropriate through links on the Council's website, information networks and customer advice. Information to be added onto the Rutland Information Service website.</p>
<p>2017: Retain targets 3.4 (ECO expected to be re-launched as Fuel Poverty Obligation from 2018), 5.1 and 7.2 [EPC advisor superseded by the Energy Saving Trust's similar tool]</p>			
<p>4.3, 5.2 [2015:] Provide additional guidance and advice on the range of renewable technologies available, including technologies and methods of installation which will be more suitable for consideration on Listed Buildings and Conservation Areas</p>	<p>RCC Places Directorate</p>	<p>Already commenced – review September 2018.</p>	<p>Council's website provides a link to the Planning Portal's Interactive House, which provides guidance. Further information in Policies SP18 and SP20 of the Site Allocations Development Plan Document and Conservation Area Appraisals. Relevant Building Regulations information is on the Council's website. Future emphasis is on linking to third party good practice information.</p>
<p>2017: Target retained</p>			

#### 4.16 Information and promotion for developers and landlords

OBJECTIVE	DELIVERY	TIMING	PROGRESS / STATUS
6.1 [2015:] Provide developers with information and links to guidance on low carbon and sustainable design and construction	RCC Places Directorate	Already commenced – review September 2018.	Information will be provided primarily through links to good practice.
2017: Target retained			
7.3, 8.3 [2015:] Raise awareness of the requirement for rented properties to meet minimum energy efficiency standards [normally EPC E rating], as required under the Energy Act 2011 and subsequent policy, ahead of the adoption date to encourage private sector landlords to complete required works before April 2018	RCC Places Directorate and partners	Further contact with major landlords and letting agents by December 2017.	A letter was sent to significant local landlords / agents in Spring 2015 notifying them of the changes.
2017: Target retained			
8.1 [2015:] We will work with our local landlords to increase energy efficiency activity in all areas through education and via landlord communications	RCC Places Directorate and partners	Already commenced – review September 2018.	Seeking to embed this approach. Please see also targets 7.3/8.3 above.
2017: Target retained			



#### 4.17 Measures taken by the Council and its partners to improve energy efficiency

4.18 A range of initiatives are used in Rutland to encourage and facilitate affordable warmth. This includes the promotion of ECO measures (expected to be relaunched by the Government as the Fuel Poverty Obligation from late 2018), identifying vulnerable people with a heating crisis and working with initiatives such as those supported by the High Sheriff of Rutland's Fund. From January 2015 to March 2016, the latter fund enabled 23 vulnerable households to receive practical measures through Change Agents to help them keep warm and also provided £1,080 to residents through Charity Link. We promote awareness amongst the community, support groups and those who work with people who are likely to be in fuel poverty. This then enables people to be helped, or to be signposted towards specialist help and advice. A wide range of information is also available through the Council's website and this will be extended to the Council's on-line Rutland Information Service.

OBJECTIVE	DELIVERY	TIMING	PROGRESS / STATUS
8.2 [2015:] Where necessary we will continue to use our enforcement powers under the Housing Act 2004 where serious hazards are identified following a Housing Health and Safety Rating System (HHSRS) assessment, to require landlords to rectify the excess cold hazard in their property	Target deleted	Target deleted	This is used as/if needed and continues to be part of the Council's housing enforcement policy. As this is an ongoing operational task covered by an existing policy and is not a clear target, it has been deleted from this Action Plan.
2017: Target deleted			

OBJECTIVE	DELIVERY	TIMING	PROGRESS / STATUS
9.2 [2015:] Identify persons on benefits who may qualify for and encourage take up of the ECO	RCC and partners	Already commenced – review September 2018.	Council’s approach is focused on tackling fuel poverty, whether or not the household is on benefits and our partners used a range of mailshots to reflect this. We will continue to work with partners and through our website, telephone contact and, if practicable, targeted home visits. We will continue to explore new partnerships where resources permit. Revised target reflects the government’s proposed new policies.
2017: Revise as “Identify persons or groups of people who may qualify for ECO or the Fuel Poverty Obligation, using the local ‘flexible eligibility’ where appropriate”			
9.3 [2015:] Identify target areas and prioritise roll out	RCC and appointed partner	Target deleted	A mailshot was carried out, in partnership with Change Agents, in 2015 targeted at properties with solid walls which were likely to be hard to treat. Many of these were in areas that are off-gas or were modest properties in town centres.  The Government’s proposed new approach is less focused on tackling specific areas of private sector housing and is more focused on individual fuel poverty.
2017: target deleted			
9.4 [2015:] Determine any synergies with other refurbishment work and other Local Authority objectives (e.g. area regeneration, ECO Carbon Saving Communities obligation)	RCC Places Directorate, appointed partner and RPs	Target deleted	Derwent Drive flats in Oakham added to gas network. Some solid wall properties to be replaced with new build to higher energy standards (subject to planning). Some solid wall properties being replaced. Government is abolishing the Carbon Saving Communities obligation.

OBJECTIVE	DELIVERY	TIMING	PROGRESS / STATUS
2017: target deleted			This is no longer needed as a separate target and can be covered under targets 9.5 & 9.6 below.
9.5 [2015:] Investigate with Registered Providers of social housing (RPs) any possible roll out in their housing stock	RCC Places Directorate, RPs and other partners	Already commenced – review September 2018.	Joint information sharing and signposting takes place. Expectation is that RPs should be proactive.  Government's proposed new approach will allow some RP properties in EPC Bands E, F & G to be treated when they had not previously been eligible under ECO.
2017: Retain target			
9.6 [2015:] Work with local housing providers in the delivery of area-based energy efficiency improvements	RCC Places Directorate, RPs and other partners	Ongoing. Work in Empingham to commence in 2017.	Area based work has taken place in Derwent Drive, with the installation of gas & gas heating. Spire Homes also have plans well advanced to refurbish or replace outdated concrete housing at a number of locations. These were assisted by advice from the Council.  Expectation is that RPs should be proactive.  There are further opportunities for gas to be installed in other RP properties.
2017: Retain target			
9.7 [2015:] Work with RPs to encourage the take up of the Green Deal and any synergies with other refurbishment work and other Local Authority objectives	Target deleted	Target deleted	The Green Deal no longer really exists for new installations. (It may be relaunched as a private sector loan.)

OBJECTIVE	DELIVERY	TIMING	PROGRESS / STATUS
2017: Target deleted			
10.1 [2015:] Promote switching suppliers, which may be individual or collective as appropriate / available	RCC Places Directorate and partners	Ongoing for web based advice	Individual switching promoted where appropriate, but limited scope for savings especially where on a card meter etc.
2017: Retain target		<p>Training to be organised in 2017</p> <p>Switching event to be organised in Oakham town centre Spring 2017.</p>	<p>In 2015, through Change Agents the Big Energy Saving Network champion trained 42 members of frontline staff and spoke to 94 members of the public at community groups &amp; libraries about their energy bills. 87 residents changed tariff during a home visit by Change Agents.</p> <p>Spire Homes, the largest RP in Rutland, promote switching.</p> <p>Leaflets covering switching displayed at Carers Rights and Wellbeing Day, December 2016.</p>

Signed off by Helen Briggs

[signed]

Position

Chief Executive –

Rutland County Council

## APPENDIX 1

## HECA Action Plan 2017

### Strategic Performance Indicators

STRATEGIC PERFORMANCE INDICATOR	DELIVERY	TIMING	PROGRESS / STATUS
<p>1.3 We will seek to reduce carbon emissions in the housing sector by 24% on 2009 levels by 2027.</p>	<p>RCC Places Directorate</p>	<p>2027</p>	<p>Domestic CO<sub>2</sub> emissions in Rutland fell by 16% between 2009 &amp; 2014, although some of this may be weather related.</p>
<p>1.5 75% of all properties to achieve a minimum energy efficiency rating of Band D by 2020.</p> <p>40% of all properties to achieve a minimum energy rating of Band C by 2025.</p> <p>Reduce proportion of households that are fuel poor to 9% by 2020 and 8% by 2025.</p>	<p>RCC Places Directorate and all partners, including energy companies and national Government.</p>	<p>2020 and 2025</p>	<p>In 2015, 68% of properties had a minimum energy rating of Band D and 33% were a minimum of Band C.</p> <p>In 2014, 10.6% of households were fuel poor.</p>

## Data and assessment

OBJECTIVE	ACTIONS	DELIVERY	TIMING	PROGRESS / STATUS										
<p>Monitor the uptake of [renewable technologies]:</p>	<p>4.4 renewable technologies and the Feed-in Tariff scheme in the county of Rutland through data available from the Ofgem database for the Feed-in Tariff [FIT] and from the Council's Building Control and/or Planning Permission records</p>	<p>RCC Planning Policy</p>	<p>Already commenced – review September 2018.</p>	<p>Domestic photovoltaic installations with FIT increased from 529 at June 2014 to 809 at June 2016. There were 2 domestic wind turbines at both dates (<i>Govt. FIT statistics</i>). A significant part of this increase is due to new build dwellings.</p> <p>A new FIT scheme began in February 2016, with much lower amounts of income receivable for electricity from new installations which may impact on future development, as may the Government's proposed move away from the current ECO subsidies for renewables and new build.</p> <p>Building Control Records show completed applications specifically for solar panels as follows:</p> <table data-bbox="1391 1177 1624 1358"> <tr> <td>2011/12:</td> <td>17</td> </tr> <tr> <td>2012/13:</td> <td>4</td> </tr> <tr> <td>2013/14:</td> <td>2</td> </tr> <tr> <td>2014/15:</td> <td>2</td> </tr> <tr> <td>2015/16:</td> <td>3</td> </tr> </table>	2011/12:	17	2012/13:	4	2013/14:	2	2014/15:	2	2015/16:	3
2011/12:	17													
2012/13:	4													
2013/14:	2													
2014/15:	2													
2015/16:	3													

OBJECTIVE	ACTIONS	DELIVERY	TIMING	PROGRESS / STATUS
<p>Monitor the uptake of [renewable technologies], (continued):</p>	<p>5.3 renewable heat technologies in the county of Rutland through data available from the Renewable Heat Incentives scheme register (when available) and from the Council Building Control and/or Planning Permission records</p>	<p>RCC Planning Policy</p>	<p>Already commenced – review September 2018.</p>	<p>As of July 2014, 15 householder RHPP vouchers had been redeemed. Between April 2014 &amp; June 2016, 55 domestic installations had been accredited under the new version of domestic RHI (<i>source: Govt RHI statistics</i>).</p> <p>Building Control information is given at target 4.4 above.</p>
<p>7.1 Establish and maintain data on the energy efficiency rating of residential accommodation within the county of Rutland, including data from the Energy Performance Certificate (EPC) Registry</p>	<p>Obtain full EPC dataset when available.</p>	<p>RCC Places Directorate and partners</p>	<p>November 2017</p>	<p>Data collected and updated using statistical tables from the Government and Spire Homes, as shown in HECA Progress Report 2017. The Government is introducing a new process for councils to obtain the full EPC dataset, which is not yet in place.</p>

## Public information and promotion

OBJECTIVE	ACTIONS	DELIVERY	TIMING	PROGRESS / STATUS
<p>Provide information to residents and (where applicable) businesses on [relevant energy efficiency and fuel poverty initiatives]:</p>	<p>3.4 ECO / Fuel Poverty Obligation;</p> <p>5.1 available renewable heat technologies, the domestic Renewable Heat Incentive and microgeneration;</p> <p>7.2 Energy Saving Trust's <a href="#">Home Energy Check</a> tool;</p> <p>4.3, 5.2 additional guidance and advice on the range of renewable technologies available, including technologies and methods of installation which will be more suitable for consideration on Listed Buildings and Conservation Areas.</p>	<p>RCC Places Directorate and partners, including the Community Prevention and Wellness Services</p>	<p>Already commenced – review September 2018.</p>	<p>149 ECO measures installed in Rutland homes in 2015.</p> <p>Information shared as appropriate through links on the Council's website, information networks and customer advice. Information to be added onto the Rutland Information Service website.</p> <p>Council's website provides a link to the Planning Portal's Interactive House, which provides guidance. Further information in Policies SP18 and SP20 of the Site Allocations Development Plan Document and Conservation Area Appraisals. Relevant Building Regulations information is on the Council's website. Future emphasis is on linking to third party good practice information.</p>



## Information and promotion for developers and landlords

OBJECTIVE	ACTIONS	DELIVERY	TIMING	PROGRESS / STATUS
Improve information and promotion for developers	6.1 Provide developers with information and links to guidance on low carbon and sustainable design and construction	RCC Places Directorate	Already commenced – review September 2018.	Information will be provided primarily through links to good practice.
Improve information and promotion for landlords	7.3, 8.3 Raise awareness of the requirement for rented properties to meet minimum energy efficiency standards [normally EPC E rating], as required under the Energy Act 2011 and subsequent policy, ahead of the adoption date to encourage private sector landlords to complete required works before April 2018	RCC Places Directorate	Further contact with major landlords and letting agents by December 2017.	A letter was sent to significant local landlords / agents in Spring 2015 notifying them of the changes.
	8.1 We will work with our local landlords to increase energy efficiency activity in all areas through education and via landlord communications	RCC Places Directorate and partners	Already commenced – review September 2018.	Seeking to embed this approach. Please see also targets 7.3/8.3 above.

## Measures taken by the Council and its partners to improve energy efficiency

OBJECTIVE	ACTIONS	DELIVERY	TIMING	PROGRESS / STATUS
<p>[2.13] Work with social care and health care providers, town &amp; parish councils, community and other organisations (see HECA Further Report 2013, paragraphs 2.3 &amp; 2.13 and Table 2)</p>	<p>Support the Home First approach in the STP, through working with social care staff &amp; partners to increase awareness of issues related to cold housing.</p>	<p>RCC Places Directorate, People Directorate, Public Health and partners</p>	<p>Scope by June 2017, then ongoing.</p>	<p>New Private Sector Housing Renewal Policy being developed.</p>
	<p>Work in partnership with social care &amp; health providers, town &amp; parish councils, community and other relevant organisations, working on joint initiatives and ensuring that they are aware of referral systems.</p>	<p>RCC Places Directorate and People Directorate and partners</p>	<p>July 2017, then ongoing reminders / update.</p>	<p>There have been a number of initiatives involving the community in Rutland, such as Energy Action for Rutland. Further initiatives will be developed with partners.</p>
	<p>Engage with Public Health to gather intelligence on health trends regarding cold homes, including through the Joint Strategic Needs Assessment.</p>	<p>RCC Places Directorate, People Directorate and Public Health</p>	<p>Already commenced</p>	<p>Review September 2018</p>
<p>9.2 Identify persons or groups of people who may qualify for ECO or the Fuel Poverty Obligation, using the latter's local 'flexible eligibility' where appropriate</p>	<p>Further action will be taken after the Government's guidance has been published. Council's approach is focused on tackling fuel poverty, whether or not the household is on benefits and our partners used a range of mailshots to reflect this.</p>	<p>RCC and partners</p>	<p>Already commenced – review September 2018.</p>	<p>We will continue to work with partners and through our website, telephone contact and, if practicable, targeted home visits. We will continue to explore new partnerships where resources permit. Revised target reflects the government's proposed new policies.</p>

OBJECTIVE	ACTIONS	DELIVERY	TIMING	PROGRESS / STATUS
<p>9.5 Investigate with Registered Providers of social housing (RPs) any possible roll out in their housing stock</p>	<p>Monitor RP delivery. Identify and work on joint initiatives where appropriate.</p>	<p>RCC Places Directorate, RPs and other partners  Expectation is that RPs should be proactive.</p>	<p>Already commenced – review September 2018.</p>	<p>Joint information sharing and signposting takes place. Government’s proposed new approach will allow some RP properties in EPC Bands E, F &amp; G to be treated when they had not previously been eligible under ECO.</p>
<p>9.6 Work with local housing providers in the delivery of area-based energy efficiency improvements</p>	<p>Identify and work on joint initiatives where appropriate.</p>	<p>RCC Places Directorate, RPs and other partners  Expectation is that RPs should be proactive.</p>	<p>Ongoing. Work at Empingham to commence in 2017.</p>	<p>Area based work has taken place in Derwent Drive, installing gas &amp; gas heating. Spire Homes also have plans well advanced to refurbish or replace outdated concrete housing at a number of locations. These were assisted by advice from the Council. There are further opportunities for gas to be installed in other RP properties.</p>

OBJECTIVE	ACTIONS	DELIVERY	TIMING	PROGRESS / STATUS
<p>10.1 Promote switching suppliers, which may be individual or collective as appropriate / available</p>	<p>Provide web-based information on switching.</p> <p>Review proposals to deliver training to RCC staff &amp; partners on giving switching advice.</p> <p>Consider opportunities for collective switching.</p> <p>Organise switching event.</p>	<p>RCC Places Directorate and partners</p>	<p>Ongoing for web based advice</p> <p>Training to be organised in 2017</p> <p>Switching event to be organised in Oakham town centre Spring 2017.</p>	<p>Individual switching promoted where appropriate, but limited scope for savings especially where on a card meter etc. Participation in a switching scheme using home visits and a collective switching scheme is being examined.</p> <p>Information on past delivery listed at target 10.1 in the main body of this report.</p> <p>Liaising with organisation about providing training.</p> <p>Spire Homes, the largest RP in Rutland, promote switching.</p> <p>Leaflets covering switching displayed at Carers Rights and Wellbeing Day, December 2016.</p>

## APPENDIX 2

## Glossary

**Affordable warmth** – where a household can afford to heat their home to adequate temperatures without experiencing hardship.

**Cabinet** – Rutland County Council's Cabinet or 'executive' where many decisions are made.

**'Carbon'** – used loosely as shorthand for Carbon Dioxide (CO<sub>2</sub>).

**Carbon Dioxide (CO<sub>2</sub>)** is a gas which is produced when anything organic is burnt (including coal, gas and oil, either directly or where these are used for generating electricity). It does not have any direct health effect but it plays a significant role in adding to the greenhouse effect.

**Conservation Area** – a designated area of special architectural or historic interest, the character or appearance of which it is desirable to preserve or enhance.

**DBEIS – Department for Business, Energy and Industrial Strategy**, a Government department which took over responsibility for home energy policy from the DECC in 2016.

**DECC - Department of Energy and Climate Change**, a superseded Govt. dept.

**ECO – Energy Companies Obligation**, a Government initiative whereby investment from energy companies is used to provide energy efficiency improvements.

**Energy Performance Certificate (EPC) Registry** – a national database where EPC scores are recorded ('lodged').

**Energy Performance Certificates (EPCs)** are required to be completed for each property at the point of sale, rent or build under the EU Directive on the Energy Performance of Buildings 2002/91/EC. The EPC provides an energy efficiency rating on a scale of 1 to 100, based on the reduced Standard Assessment Procedure (rdSAP). These are then placed into bands, with 'A' having the best performance and 'G' the poorest.

**FIT – Feed-in Tariff** – a Government sponsored initiative whereby householders with eligible renewable sources connected to the national electricity grid are paid for the electricity they feed in for use elsewhere.

**Fuel Poverty (or fuel poor)** - sometimes used broadly to describe situations where households cannot afford to keep warm at home, but see LIHC (Low Income High Costs Indicator) for the Government's current official definition for England.

**Fuel Poverty Obligation** – a proposed replacement for ECO, aimed more specifically at addressing fuel poverty.

**Green Deal** – a Government sponsored scheme where providers offer energy efficiency investments to householders and then recoup payments through their energy bills. Not really open to new applicants.

**Health and Safety Rating System (HHSRS)** – a risk assessment procedure for residential properties. If the hazard of excess cold is identified and judged to be likely to cause harm to a person living there, due to the heating system being broken, inadequately installed, or inefficient or if the house is poorly insulated, the Council is sometimes required to take enforcement action.

**HECA - Home Energy Conservation Act 1995** - this is the legislation under which this report is produced.

**HECA Further Report** – a report by councils produced in 2013 which was required by Government guidance issued under HECA.

**HECA Progress Report** – a report (this document) which councils are required to submit to Government by 31 March 2017 to show their progress towards the targets in the HECA Further Report. It also provides an opportunity to revise targets if necessary. HECA progress reports must be submitted every two years until 2027.

**Joint Strategic Needs Assessment (JSNA)** - this analyses the health needs of populations to help improve the physical and mental health and wellbeing of individuals and communities. It informs and guides the commissioning of health, wellbeing and social care services. The JSNA also underpins the Joint Health and Wellbeing Strategy.

**LHC – Low Income High Costs Indicator**, the Government's new definition of fuel poverty in England.

**Listed Building** – a protected historic building which is on the National Heritage List for England.

**Microgeneration** – on-site small scale renewable and low carbon generation technologies.

**Nottingham Declaration on Climate Change** – a commitment signed by all of the councils in the East Midlands committing them to working with partners to address climate change and combat fuel poverty.

**Ofgem – the Office of Gas and Electricity Markets** - a Government body which regulates the companies which run the gas and electricity networks. It takes decisions on price controls and enforcement, acting in the interests of consumers and helping the industries to achieve environmental improvements.

**Photovoltaic (PV)** – a system which converts sunlight to electrical power.

**RCC – Rutland County Council** – the Council with responsibility for housing which produces this document.

**rdSAP / reduced Standard Assessment Procedure** – see Energy Performance Certificates (EPCs).

**Renewable** – where an energy source is used which is easily replaceable once used (as opposed to oil or gas). Common renewable sources are solar and wind energy.

**Renewable Heat Incentive (RHI)** – a national Government-sponsored scheme which assist with the installation of renewable energy technology. It has ‘domestic’ and ‘non-domestic’ versions, depending on whether it is for a home or business premises.

**Renewable Heat Premium Payment (RHPP)** - a national scheme which assisted with the installation of renewable energy technology. It has been replaced by the RHI.

**RP - registered provider** of social housing, usually a housing association.

**SAP DPD – Site Allocations and Policies Development Plan Document**, part of the statutory development plan for Rutland. It identifies specific sites for development and sets out detailed development planning policies.

**Sign-posting** – where an organisation is not able to provide a service themselves, so directs a customer to somewhere which can provide the service.

**Smart meter** – a smart meter sends an electronic meter reading to the energy supplier. It also includes a home digital display to keep track of the amount and cost of energy used.

**Solid wall properties** – where properties which have external walls which do not have two layers and a cavity (gap) in between. Solid walls properties are harder than normal to insulate, because there is no cavity to place the insulation in.

**SPD – Supplementary Planning Document** - document which expands on policies in the statutory development plan.

**STP – Sustainability and Transformation Plan** – the joint NHS and local authority plan for improving health and care across Leicester, Leicestershire and Rutland.

**Switching** – where consumers change the company they purchase their gas and/or electricity from, usually with the intention of purchasing fuel more cheaply. Switching can be ‘individual’, or ‘collective’ where a large number of consumers switch at the same time.

**Tenure** – the ownership type of a home – e.g. owner-occupied, private rented, social/affordable rented, shared ownership.